

HOUSTON, TEXAS

AL-6079 (FAA)

VOR-D

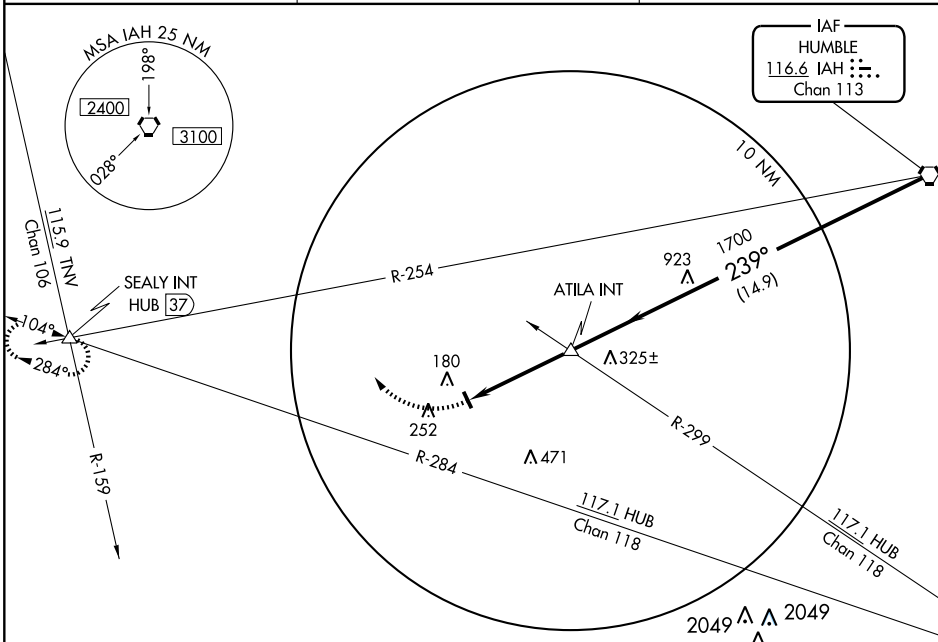
HOUSTON/ WEST HOUSTON (IWS)

VORTAC IAH 116.6 Chan 113	APP CRS 239°	Rwy Idg TDZE Apt Elev 111	NA NA 111
---	------------------------	---	------------------------

▼ Obtain local altimeter setting on CTAF; when not received, use George Bush Intercontinental/Houston altimeter setting.
 ▲ NA

MISSED APPROACH: Climbing right turn to 2000 via HUB VOR/DME R-284 to SEALY INT/HUB 37 DME and hold.

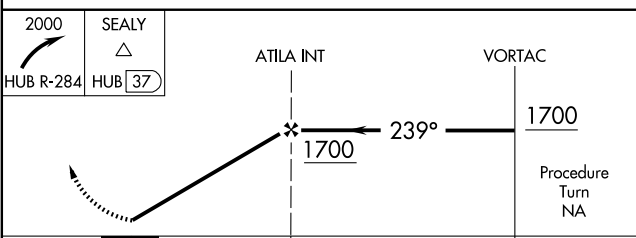
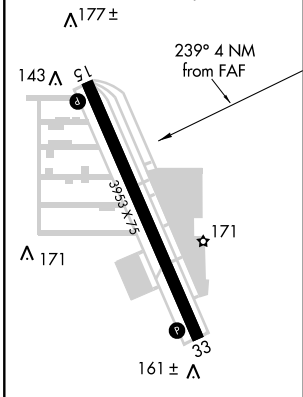
HOUSTON APP CON 123.8 257.7	CLNC DEL 121.15	UNICOM 123.05 (CTAF) 0
---------------------------------------	---------------------------	----------------------------------



SC-5, 22 OCT 2009 to 19 NOV 2009

SC-5, 22 OCT 2009 to 19 NOV 2009

ELEV 111	HIRL Rwy 15-33
	REIL Rwys 15 and 33



CATEGORY	A	B	C	D
CIRCLING	540-1 429 (500-1)	580-1 469 (500-1)	580-1½ 469 (500-1½)	NA
GEORGE BUSH INTERCONTINENTAL/HOUSTON ALTIMETER SETTING				
CIRCLING	600-1	489 (500-1)	600-1½ 489 (500-1½)	NA

FAF to MAP 4 NM					
Knots	60	90	120	150	180
Min:Sec	4:00	2:40	2:00	1:36	1:20

HOUSTON, TEXAS

Orig-A 06103

HOUSTON/WEST HOUSTON (IWS)

29° 49'N-95° 40'W

VOR-D