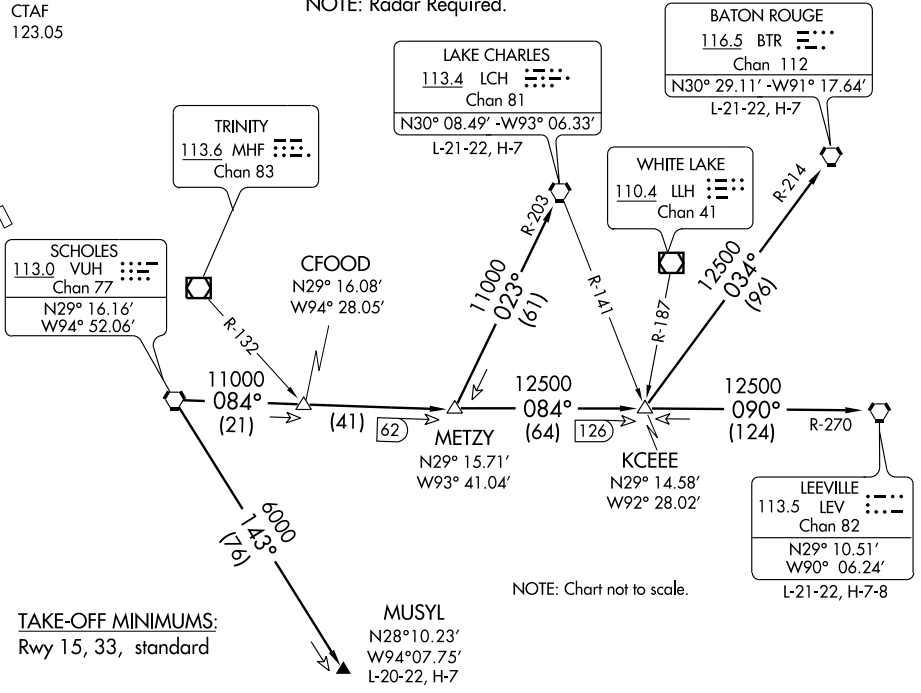


CLNC DEL
121.15
HOUSTON DEP CON
123.8 257.7
CTAF
123.05

NOTE: LCH, BTR, and LEV transitions are ATC assigned only, do not file.
NOTE: For LCH, BTR, LEV transitions, this procedure requires over water flight not to exceed 35 miles from nearest shoreline.
NOTE: Radar Required.



TAKE-OFF MINIMUMS:
Rwy 15, 33, standard

TAKE-OFF OBSTACLES:

Rwy 15, Vehicle and road beginning 50' from DER, 57' left of centerline, 15' AGL/138' MSL. Vehicle and road 280' from DER, 317' right of centerline, 15' AGL/124' MSL.
Rwy 33, Bldg 265' from DER, 365' left of centerline, 33' AGL/143' MSL.

DEPARTURE ROUTE DESCRIPTION

When entering controlled airspace, fly assigned heading for vectors to VUH VORTAC, maintain 4000', expect filed altitude 10 minutes after departure.

BATON ROUGE TRANSITION (VUH3.BTR): From over VUH VORTAC via VUH R-084 to KCEEE INT, then via BTR R-214 to BTR VORTAC.

LAKE CHARLES TRANSITION (VUH3.LCH): From over VUH VORTAC via VUH R-084 to METZY INT, then via LCH R-203 to LCH VORTAC.

LEEVILLE TRANSITION (VUH3.LEV): From over VUH VORTAC via VUH R-084 to KCEEE INT, then via LEV R-270 to LEV VORTAC.

MUSYL TRANSITION (VUH3.MUSYL): From over VUH VORTAC via VUH R-143 to MUSYL.

SC-5, 22 OCT 2009 to 19 NOV 2009

SC-5, 22 OCT 2009 to 19 NOV 2009