

HOUSTON, TEXAS

AL-6079 (FAA)

RNAV (GPS) RWY 15

HOUSTON/ WEST HOUSTON (IWS)

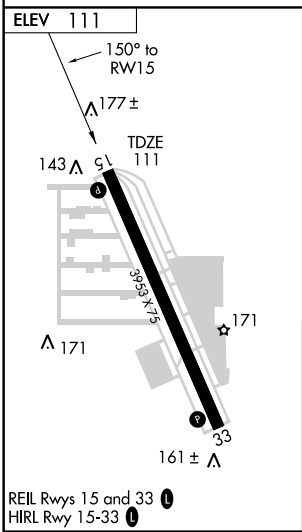
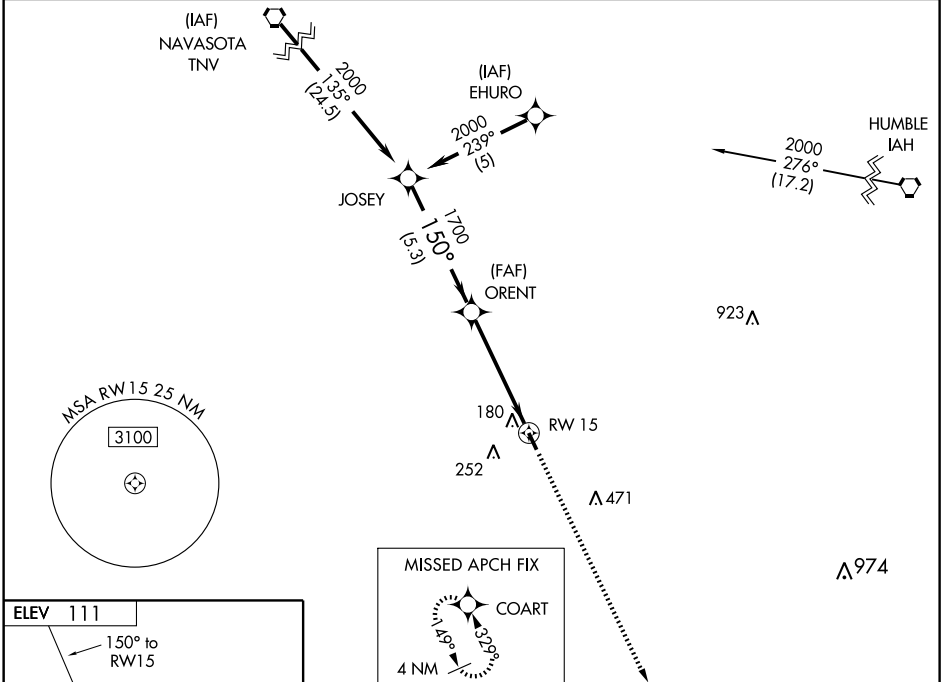
APP CRS 150°	Rwy Idg 3953
	TDZE 111
	Apt Elev 111

▽ BARO-VNAV NA below -1.5°C (5°F).
GPS or RNP -0.3 required. DME/DME RNP -0.3 NA.

△ NA BARO-VNAV NA with George Bush Intercontinental/Houston altimeter setting.
Obtain local altimeter setting on CTAF; when not received, use George Bush Intercontinental/Houston altimeter setting and increase all MDAs 60 feet and CAT C visibility 1/4 mile.

MISSED APPROACH: Climb to 3000 via 150° course to COART and hold.

HOUSTON APP CON 123.8 257.7	CLNC DEL 121.15	UNICOM 123.05 (CTAF) 0
---------------------------------------	---------------------------	----------------------------------



	JOSEY	ORENT	RWY 15	COART
	2000	1700		3000
	150°			CRS 150°
	Procedure Turn NA			
	5.3 NM		4.8 NM	
CATEGORY	A	B	C	D
GLS PA DA	NA			
LNAV/VNAV DA	400-1 289 (300-1)			NA
LNAV MDA	480-1 369 (400-1)			NA
CIRCLING	480-1 369 (400-1)	580-1 469 (500-1)	580-1½ 469 (500-1½)	NA

HOUSTON, TEXAS
Orig 07018

29°49'N-95°40'W

HOUSTON/ WEST HOUSTON (IWS)
RNAV (GPS) RWY 15

SC-5, 22 OCT 2009 to 19 NOV 2009

SC-5, 22 OCT 2009 to 19 NOV 2009