

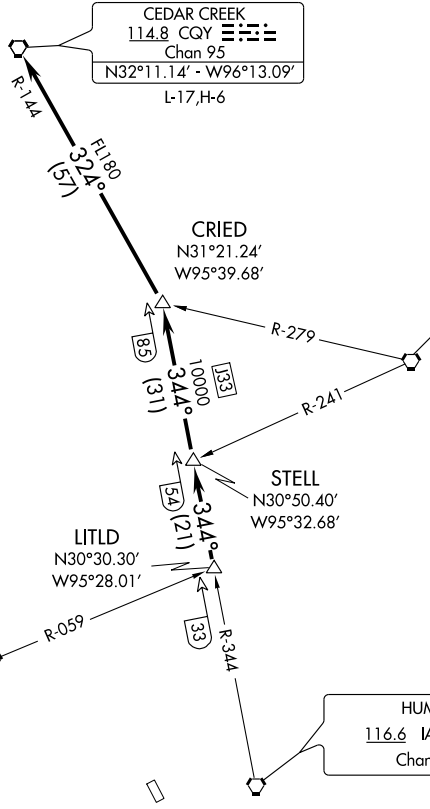
CLNC DEL
121.15
HOUSTON DEP CON
123.8 257.7
CTAF
123.05

CEDAR CREEK
114.8 CQY
Chan 95
N32°11.14' - W96°13.09'
L-17,H-6

LUFKIN
112.1 LFK
Chan 58

HUMBLE
116.6 IAH
Chan 113

NAVASOTA
115.9 TNV
Chan 106



SC-5, 22 OCT 2009 to 19 NOV 2009

SC-5, 22 OCT 2009 to 19 NOV 2009

TAKE-OFF MINIMUMS:
Rwy 15, 33, standard.

(NOTES CONTINUED ON FOLLOWING PAGE)

NOTE: Radar Required.

NOTE: Chart not to scale.

DEPARTURE ROUTE DESCRIPTION

When entering controlled airspace, fly assigned heading for vectors to LITLD INT, maintain 4000. Expect filed altitude 10 minutes after departure. Thence
. via IAH R-344 to STELL INT, then via IAH R-344 to CRIED INT, then left turn via CQY R-144 to CQY VORTAC.