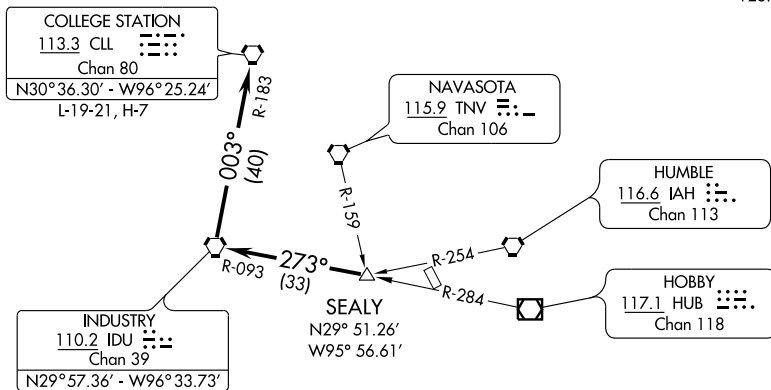


CLNC DEL
121.15
HOUSTON DEP CON
123.8 257.7
CTAF
123.05



TAKE-OFF MINIMUMS:
Rwys 15, 33 standard.

TAKE-OFF OBSTACLES:

Rwy 15, Road plus vehicle beginning 50' from DER, 57' left of centerline, 15' AGL/138' MSL. Road plus vehicle 280' from DER, 317' right of centerline, 15' AGL/124' MSL.
Rwy 33, Bldg 265' from DER, 365' left of centerline, 33' AGL/143' MSL.

NOTE: Radar Required.

NOTE: Chart not to scale.



DEPARTURE ROUTE DESCRIPTION

When entering controlled airspace, fly assigned heading for vectors to SEALY INT, maintain 4000, expect filed altitude 10 minutes after departure. Thence

. . . . via IDU R-093 to IDU VORTAC, then right turn via IDU R-003 and CLL R-183 to CLL VORTAC.