

(LIVR1.ALTAM) 09127

# LIVERMORE ONE DEPARTURE

SL-6075 (FAA)

LIVERMORE MUNI (LVK)  
LIVERMORE, CALIFORNIA

ATIS 119.65  
GND CON  
121.6  
LIVERMORE TOWER\*  
118.1 (CTAF) 239.25  
NORCAL DEP CON  
125.35 354.1

SACRAMENTO  
115.2 SAC  
Chan 99

OAKLAND  
116.8 OAK  
Chan 115

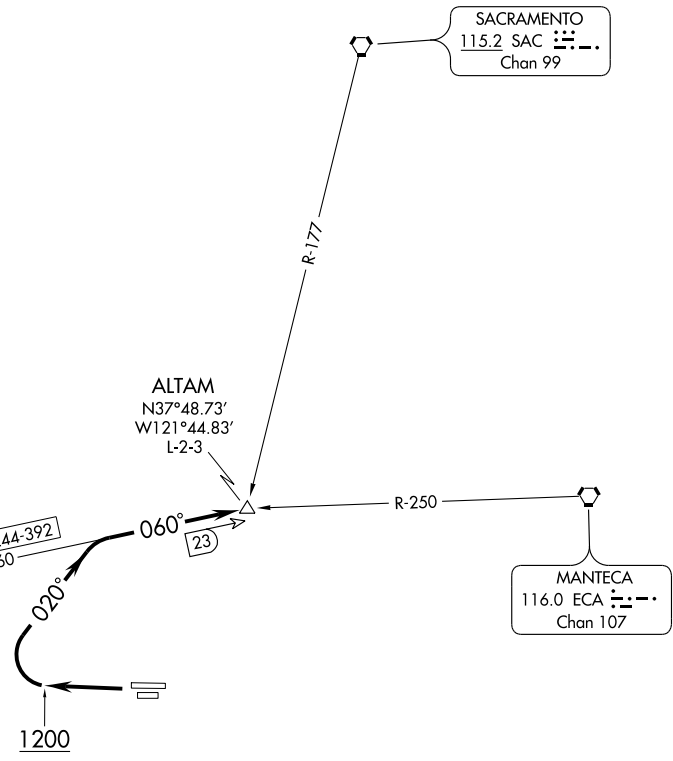
ALTAM  
N37°48.73'  
W121°44.83'  
L-2-3

MANTECA  
116.0 ECA  
Chan 107

V28-109-244-392  
R-060

SW-2, 22 OCT 2009 to 19 NOV 2009

SW-2, 22 OCT 2009 to 19 NOV 2009



TAKE-OFF MINIMUMS: 2300-2 or standard with a minimum climb of 375' per NM to 3100'.

NOTE: Chart not to scale.



## DEPARTURE ROUTE DESCRIPTION

TAKE-OFF RUNWAYS 25 L/R: Climb runway heading to 1200, then climbing right turn heading 020° and OAK R-060 to ALTAM INT. Maintain assigned altitude.

# LIVERMORE ONE DEPARTURE

(LIVR1.ALTAM) 09127

LIVERMORE, CALIFORNIA  
LIVERMORE MUNI (LVK)