

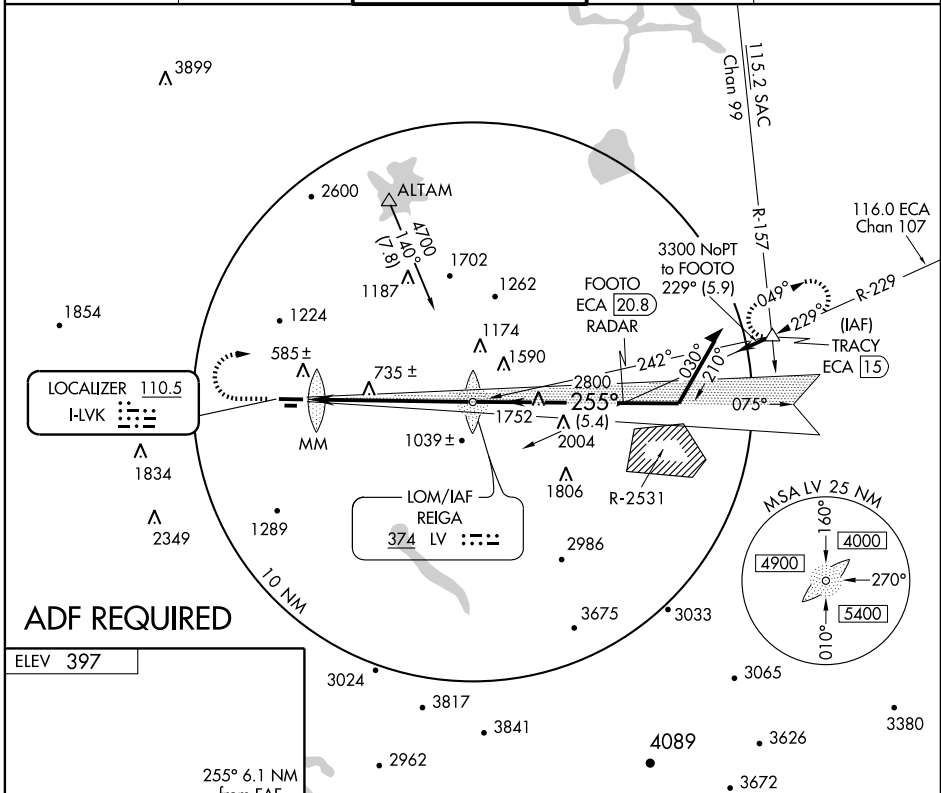
LOC I-LVK 110.5	APP CRS 255°	Rwy Idg 5253
		TDZE 397
		Apt Elev 397

ILS RWY 25R

LIVERMORE MUNI (LVK)

⚠ Circling NA north of Rwy 7L-25R.
⚠ Autopilot coupled approaches NA below 1700.
MALS MISSED APPROACH: Climb to 1100, then climbing right turn to 3000 direct REIGA LOM, then via REIGA LOM 062° bearing to TRACY Int and hold.

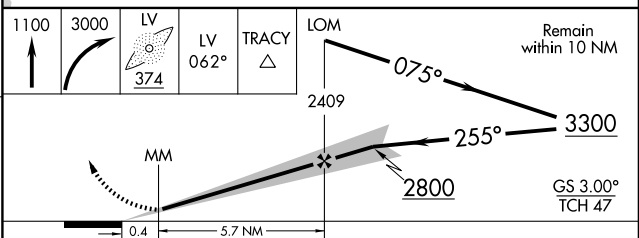
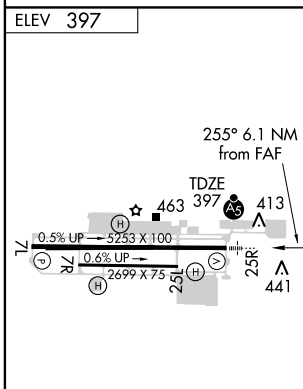
ATIS 119.65	NORCAL APP CON 123.85 278.3	LIVERMORE TOWER * 118.1 (CTAF) 0 239.25	GND CON 121.6	UNICOM 122.95
-----------------------	---------------------------------------	---	-------------------------	-------------------------



SW-2, 22 OCT 2009 to 19 NOV 2009

SW-2, 22 OCT 2009 to 19 NOV 2009

ADF REQUIRED



ELEV 397	255° 6.1 NM from FAF	1100	3000	LV 374	LV 062°	TRACY	LOM	Remain within 10 NM
MIRL Rwy 7L-25R	TDZE 397	413	463	441	25R	25R	2409	075°
FAF to MAP 6.1 NM	0.5% UP → 5253 X 100	0.6% UP → 2699 X 75	25R	25R	25R	25R	2800	255°
Knots	60	90	120	150	180			3300
Min:Sec	6:06	4:04	3:03	2:26	2:02			GS 3.00° TCH 47
CATEGORY	A	B	C	D				
S-ILS 25R		597-1/2	200 (200-1/2)					
S-LOC 25R	940-1/2	543 (600-1/2)	940-1	543 (600-1)	940-1 1/4	543 (600-1 1/4)		
CIRCLING	940-1	543 (600-1)	940-1 1/2	543 (600-1 1/2)	1100-2 1/4	703 (800-2 1/4)		