

CORNELIA, GEORGIA

AL-6074 (FAA)

VORTAC ODF	APP CRS	Rwy Idg	4111
113.4	048°	TDZE	1446
Chan 81		Apt Elev	1448

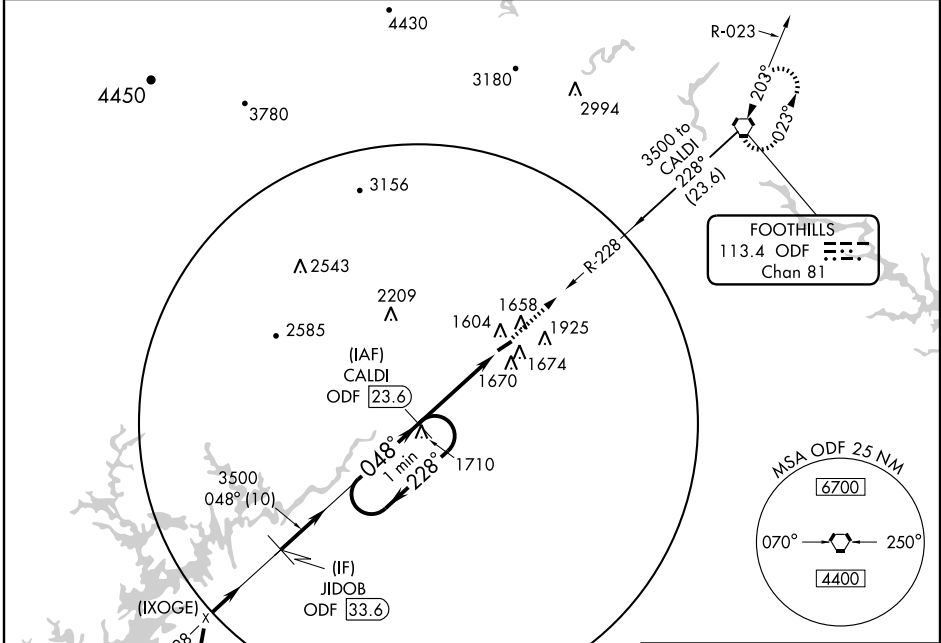
# VOR/DME RWY 6

CORNELIA/ HABERSHAM COUNTY (AJR)

**NA** If local altimeter setting not received, use Lee Gilmer Memorial altimeter setting and increase all MDAs 80 feet.

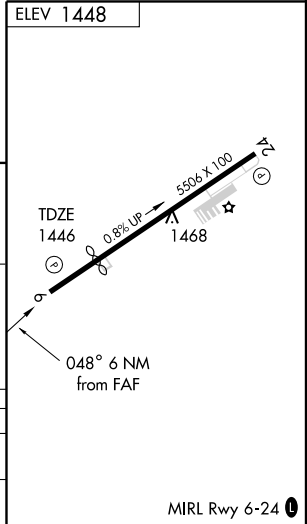
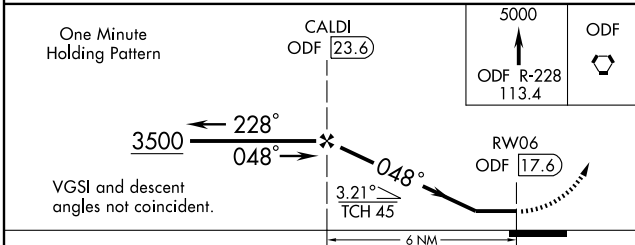
**MISSED APPROACH:** Climb to 5000 via ODF R-228 to ODF VORTAC and hold.

AWOS-3 <b>119.175</b>	ATLANTA CENTER <b>134.8 307.9</b>	UNICOM <b>122.7 (CTAF)</b>
--------------------------	--------------------------------------	-------------------------------



Procedure NA for arrivals at WOMAC via V463 southbound. (IAF) WOMAC

4000 NoPT to JIDOB ODF 33.6  
010° heading (7.6) and 048° (5.5)



CATEGORY	A	B	C	D
S-6	1980-1	534 (600-1)	1980-1½ 534 (600-1½)	1980-1¾ 534 (600-1¾)
CIRCLING	2100-1	652 (700-1)	2100-1¾ 652 (700-1¾)	2280-2¾ 832 (900-2¾)

MIRL Rwy 6-24

CORNELIA, GEORGIA  
Amdt 6 08325

34°30'N - 83°33'W

# VOR/DME RWY 6

SE-4, 22 OCT 2009 to 19 NOV 2009

SE-4, 22 OCT 2009 to 19 NOV 2009