

RNAV (GPS) RWY 24

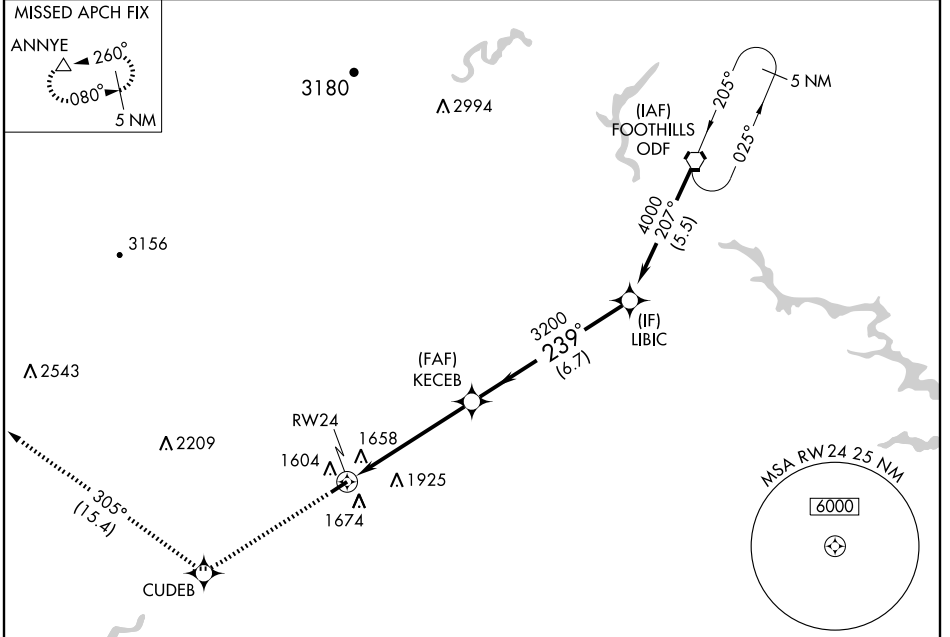
CORNELIA/HABERSHAM COUNTY (AJR)

APP CRS	Rwy Idg	5506
239°	TDZE	1448
	Apt Elev	1448

NA If local altimeter setting not received, use Lee Gilmer Memorial altimeter setting and increase all MDAs 80 feet. VDP NA when using Lee Gilmer Memorial altimeter setting. DME/DME RNP-0.3 NA. Procedure NA at night.

MISSED APPROACH: Climb to 5000 direct CUDEB and via 305° track to ANNYE and hold.

AWOS-3 119.175	ATLANTA CENTER 134.8 307.9	UNICOM 122.7 (CTAF)
---------------------------------	---------------------------------------------	--------------------------------------



SE-4, 22 OCT 2009 to 19 NOV 2009

SE-4, 22 OCT 2009 to 19 NOV 2009



5000	CUDEB	TRK 305°	ANNYE	LIBIC	Procedure Turn NA
				4000	
			KECEB	3200	
					VGSI and descent angles not coincident.
	1.7	3.7 NM	6.7 NM		

CATEGORY	A	B	C	D
RNAV MDA	2100-1	652 (700-1)	2100-1¾ 652 (700-1¾)	2100-2 652 (700-2)
CIRCLING	2100-1	652 (700-1)	2100-1¾ 652 (700-1¾)	2280-2¾ 832 (900-2¾)

MIRL Rwy 6-24