

CORNELIA, GEORGIA

AL-6074 (FAA)

NDB RWY 6

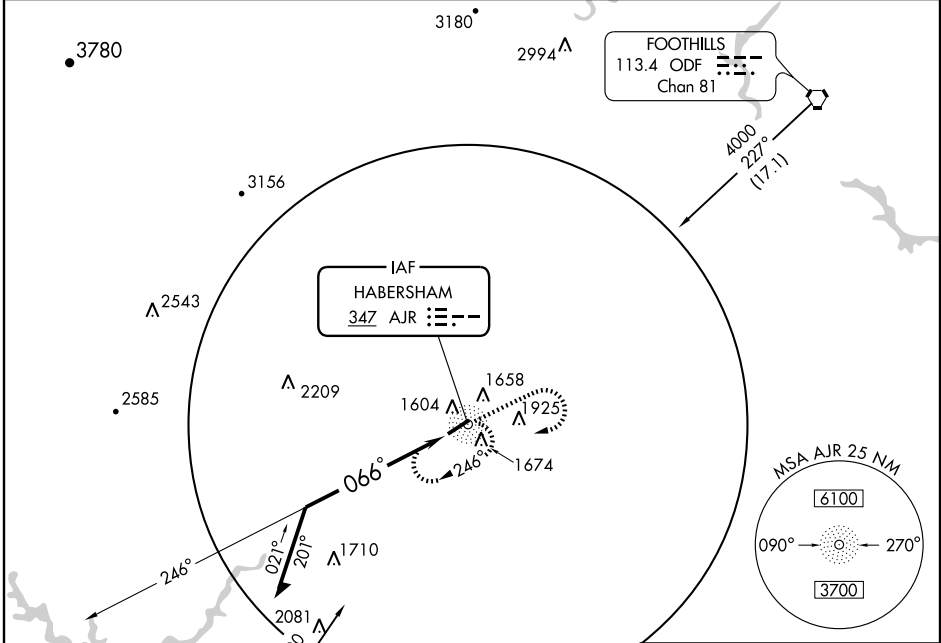
CORNELIA/HABERSHAM COUNTY (AJR)

NDB AJR 347	APP CRS 066°	Rwy Idg TDZE Apt Elev	4111 1447 1448
-----------------------	------------------------	-----------------------------	---

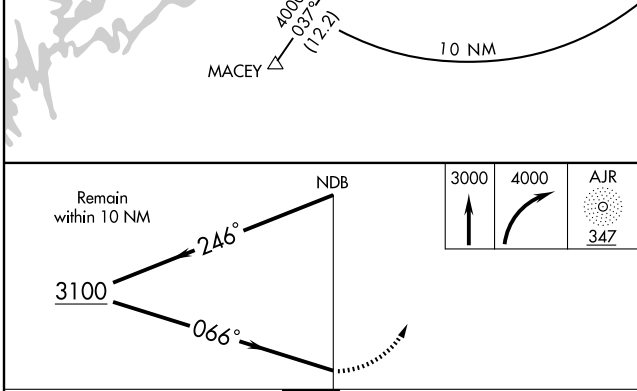
▼ If local altimeter setting not received, use Gainesville, GA altimeter setting and increase all MDAs 80 feet.
▲ NA

MISSED APPROACH: Climb to 3000 then climbing right turn to 4000 direct AJR NDB and hold.

AWOS-3 119.175	ATLANTA CENTER 134.8 307.9	UNICOM 122.7 (CTAF)
--------------------------	--------------------------------------	-------------------------------



ELEV 1448



CATEGORY	A	B	C	D
S-6	2060-1	613 (700-1)	2060-1 ³ / ₄ 613 (700-1 ³ / ₄)	NA
CIRCLING	2060-1	612 (700-1)	2100-1 ³ / ₄ 652 (700-1 ³ / ₄)	NA

MIRL Rwy 6-24

SE-4, 22 OCT 2009 to 19 NOV 2009

SE-4, 22 OCT 2009 to 19 NOV 2009

CORNELIA, GEORGIA
Amdt 1C 08325

34°30'N - 83°33'W

CORNELIA/HABERSHAM COUNTY (AJR)
NDB RWY 6