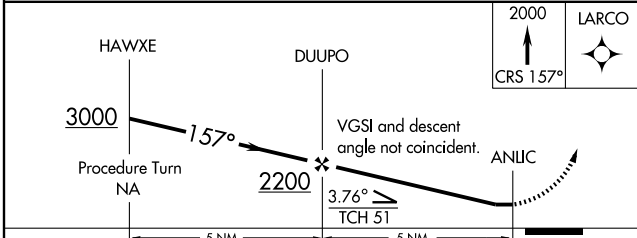
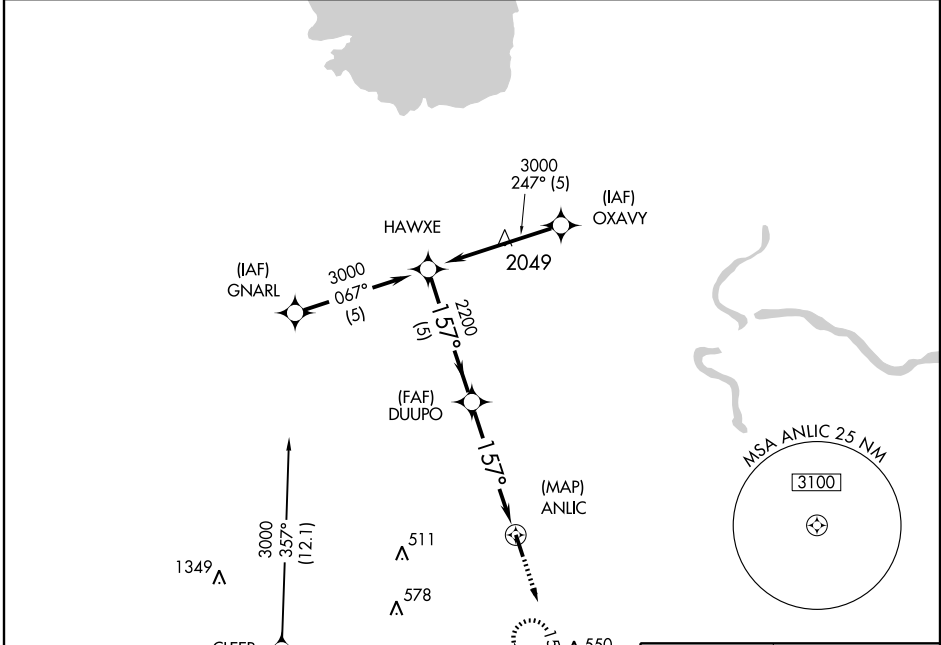


GPS RWY 16
CLEVELAND MUNI (6R3)

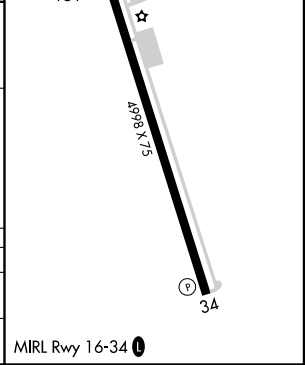
APP CRS	Rwy Idg	4998
157°	TDZE	151
	Apt Elev	151

▲ NA Use Houston, TX (George Bush Intercontinental /Houston) altimeter setting. MISSED APPROACH: Climb to 2000 via 157° course to LARCO WP and hold.

HOUSTON APP CON **119.7 281.4** UNICOM **123.0 (CTAF) 0**



CATEGORY	A	B	C	D
S-16	620-1	469 (500-1)	620-1½ 469 (500-1½)	NA
CIRCLING	640-1 489 (500-1)	660-1 509 (600-1)	660-1½ 509 (600-1½)	NA



SC-5, 22 OCT 2009 to 19 NOV 2009

SC-5, 22 OCT 2009 to 19 NOV 2009