

RNAV (GPS) Y RWY 35

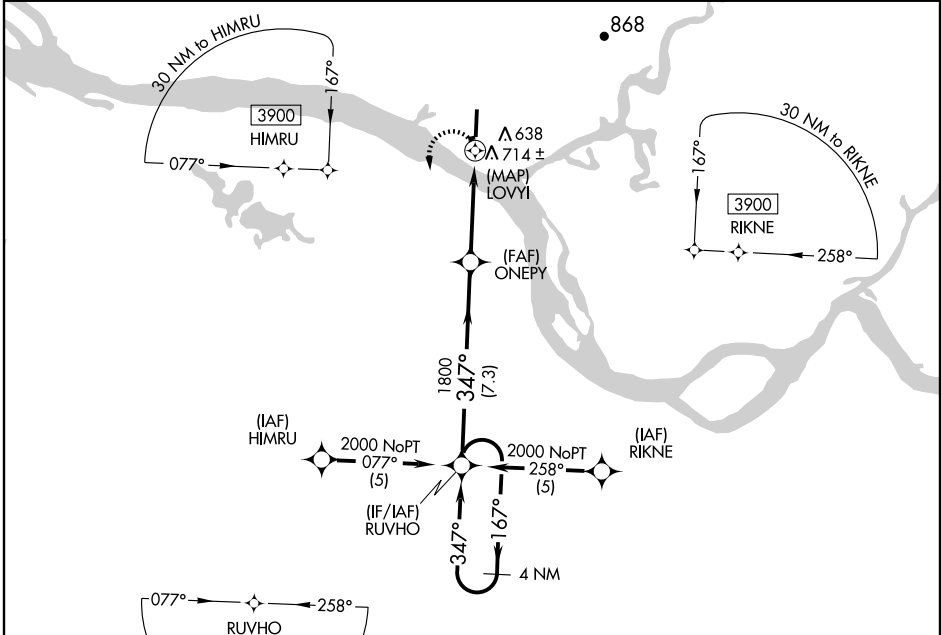
ST MARY'S (KSM)(PASM)

APP CRS 347°	Rwy Idg 6008
	TDZE 308
	Apt Elev 312

- ▼ When local altimeter setting not received, use Mountain Village altimeter setting and increase all MDAs 40 feet and all visibilities ¼ mile.
- ▲ Circling NA east of Rwy 17-35. Circling to Rwy 6 NA at night. Visibility reduction by helicopters NA. DME/DME RNP-0.3 NA.

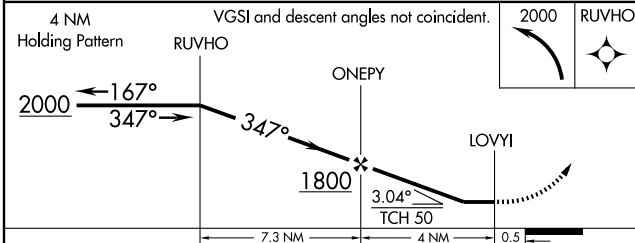
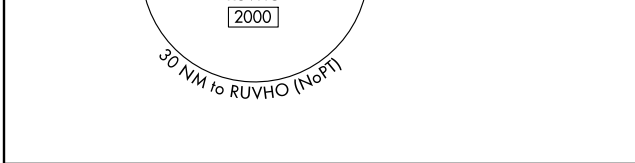
MISSED APPROACH: Climbing left turn to 2000 direct RUVHO and hold.

AWOS-3 128.7	ANCHORAGE CENTER 124.0	CTAF 122.30*
------------------------	----------------------------------	------------------------



AK, 22 OCT 2009 to 17 DEC 2009

AK, 22 OCT 2009 to 17 DEC 2009



CATEGORY	A	B	C	D
LNVA MDA	1020-1	712 (800-1)	1020-2 712 (800-2)	1020-2¼ 712 (800-2¼)
CIRCLING	1020-1	708 (800-1)	1020-2 708 (800-2)	1020-2¼ 708 (800-2¼)

