

OGALLALA, NEBRASKA

AL-6070 (FAA)

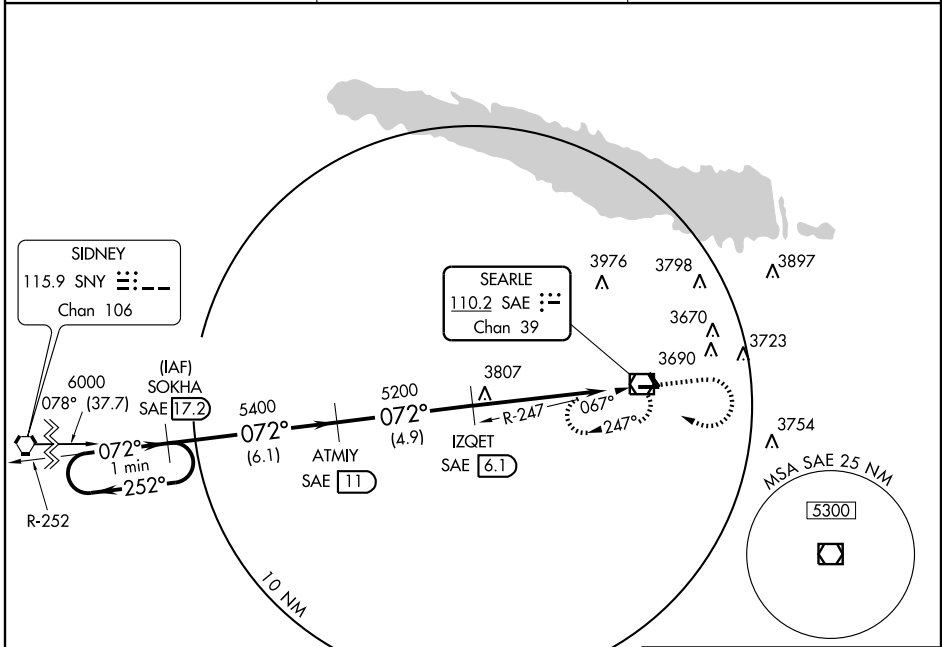
VOR/DME RWY 8
OGALLALA/SEARLE FIELD (OGA)

VOR/DME SAE 110.2 Chan 39	APP CRS 072°	Rwy Idg TDZE Apt Elev	5102 3260 3278
---	------------------------	-----------------------------	---

▼
▲ NA

MISSED APPROACH: Climb to 4400 then climbing right turn to 5200 direct SAE VOR/DME and hold

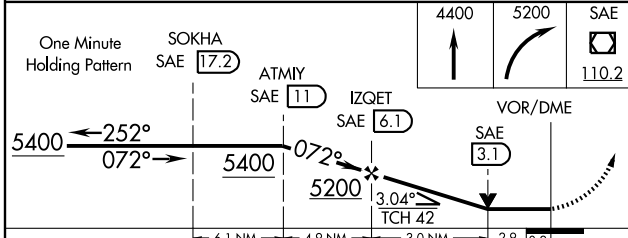
AWOS-3 121.275	DENVER CENTER 132.7 397.85	UNICOM 122.8 (CTAF) 0
--------------------------	--------------------------------------	--



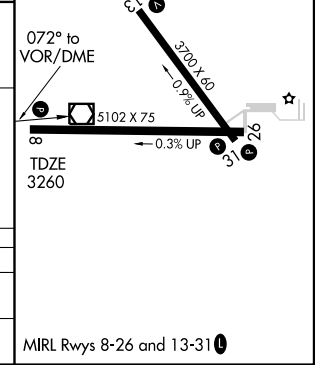
NC-2, 22 OCT 2009 to 19 NOV 2009

NC-2, 22 OCT 2009 to 19 NOV 2009

ELEV 3278



CATEGORY	A	B	C	D
S-8	4080-1 820 (900-1)	4080-1¼ 820 (900-1¼)	NA	NA
CIRCLING	4080-1 802 (900-1)	4080-1¼ 802 (900-1¼)	NA	NA



OGALLALA, NEBRASKA
Orig-A 09127

41° 07' N-101° 46' W

OGALLALA/SEARLE FIELD (OGA)
VOR/DME RWY 8

MIRL Rwy 8-26 and 13-31 **0**