

OGALLALA, NEBRASKA

AL-6070 (FAA)

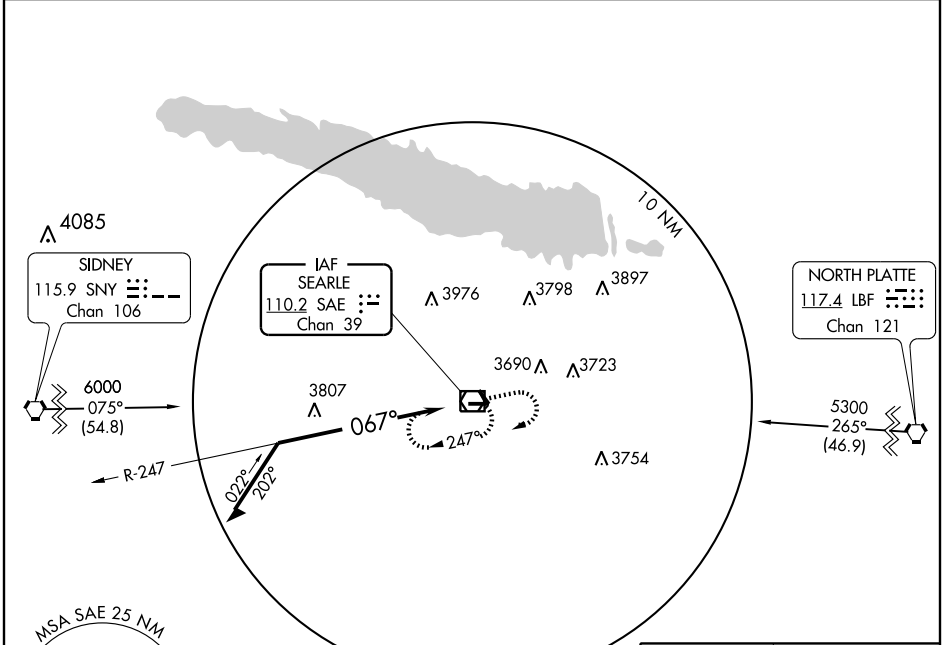
VOR/DME SAE 110.2 Chan 39	APP CRS 067°	Rwy Idg TDZE Apt Elev	5102 3260 3278
---	------------------------	-----------------------------	---

VOR RWY 8
OGALLALA/SEARLE FIELD (OGA)

▼
▲ NA

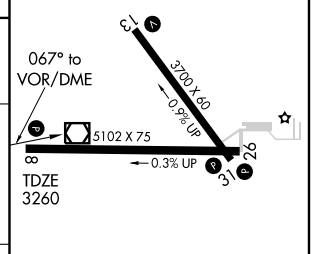
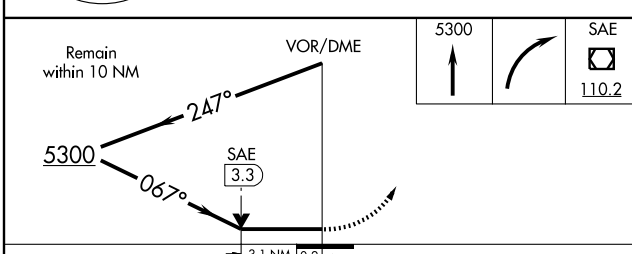
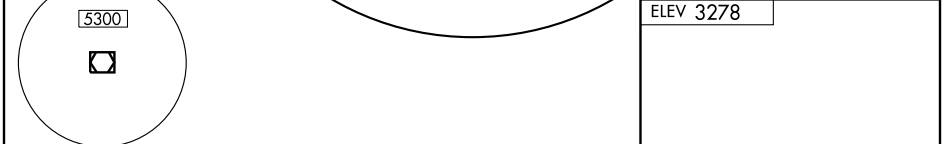
MISSED APPROACH: Climb to 5300 then right turn to SAE VOR/DME and hold.

AWOS-3 121.275	DENVER CENTER 132.7 397.85	UNICOM 122.8 (CTAF) 0
--------------------------	--------------------------------------	--



NC-2, 22 OCT 2009 to 19 NOV 2009

NC-2, 22 OCT 2009 to 19 NOV 2009



CATEGORY	A	B	C	D
S-8	4120-1 860 (900-1)	4120-1½ 860 (900-1½)	NA	NA
CIRCLING	4120-1 842 (900-1)	4120-1½ 842 (900-1½)	NA	NA

MIRL Rwy 8-26 and 13-31 **0**

OGALLALA, NEBRASKA
Amdt 5A 09127

41° 07' N-101° 46' W

OGALLALA/SEARLE FIELD (OGA)
VOR RWY 8