

OGALLALA, NEBRASKA

AL-6070 (FAA)

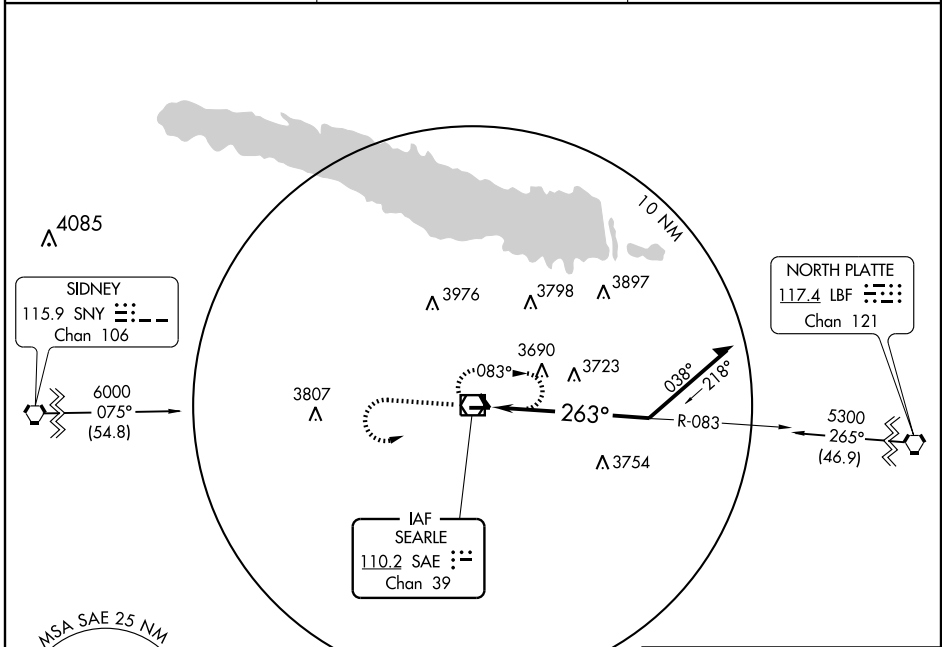
VOR/DME SAE <b>110.2</b> Chan <b>39</b>	APP CRS <b>263°</b>	Rwy Idg TDZE Apt Elev	<b>5102</b> <b>3254</b> <b>3278</b>
---	------------------------	-----------------------------	---

# VOR RWY 26

OGALLALA/SEARLE FIELD (OGA)

<p>▼</p> <p>▲ NA</p>	MISSED APPROACH: Climb to 4300 then climbing left turn to 5300 direct SAE VOR/DME and hold.
----------------------	---

AWOS-3 <b>121.275</b>	DENVER CENTER <b>132.7 397.85</b>	UNICOM <b>122.8 (CTAF) 0</b>
--------------------------	--------------------------------------	---------------------------------

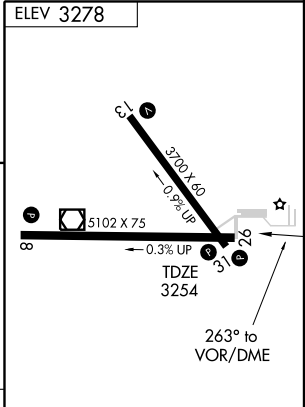
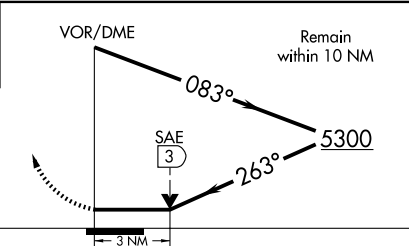


NC-2, 22 OCT 2009 to 19 NOV 2009

NC-2, 22 OCT 2009 to 19 NOV 2009



4300 ↑	5300 ↘	SAE □ 110.2
-----------	-----------	-------------------



CATEGORY	A	B	C	D
S-26	4040-1 786 (800-1)	4040-1½ 786 (800-1½)	NA	NA
CIRCLING	4040-1 762 (800-1)	4040-1½ 762 (800-1½)	NA	NA

MIRL Rwy's 8-26 and 13-31 0

OGALLALA, NEBRASKA  
Amdt 5 09127

41° 07' N-101° 46' W

# VOR RWY 26