

OGALLALA, NEBRASKA

AL-6070 (FAA)

RNAV (GPS) RWY 8

OGALLALA/SEARLE FIELD (OGA)

WAAS CH 57903 W08A	APP CRS 079°	Rwy Idg TDZE Apt Elev	5102 3260 3278
--	------------------------	-----------------------------	---

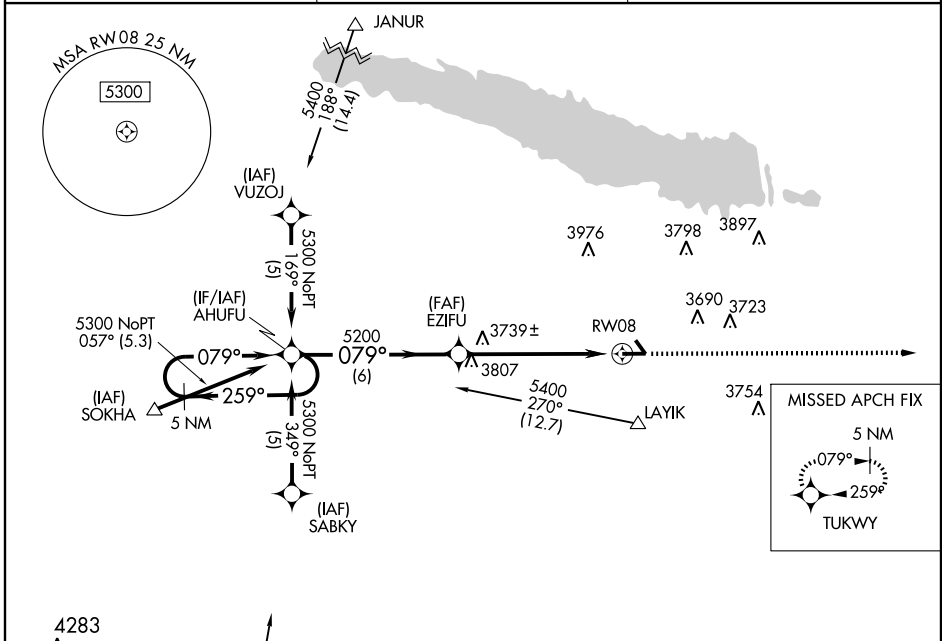
⚠ DME/DME RNP-0.3 NA. Visibility reduction by helicopters NA.
⚠ If local altimeter setting not received, use Imperial altimeter setting and increase all DAs/MDAs 100 feet. VDP NA with Imperial altimeter setting.

MISSED APPROACH: Climb to 5200 direct TUKWY and hold.

AWOS-3
121.275

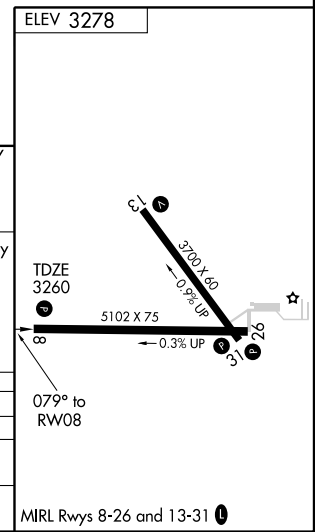
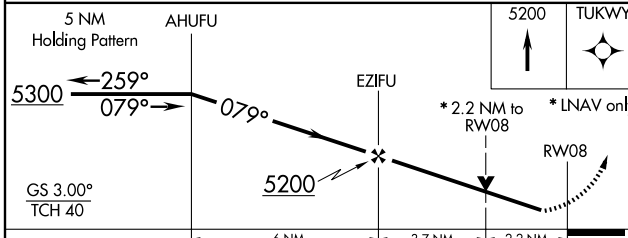
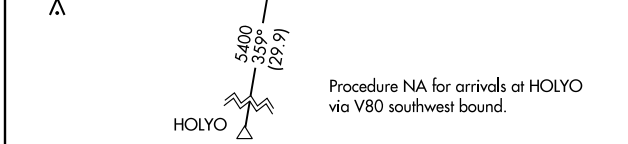
DENVER CENTER
132.7 397.85

UNICOM
122.8 (CTAF) 0



NC-2, 22 OCT 2009 to 19 NOV 2009

NC-2, 22 OCT 2009 to 19 NOV 2009



CATEGORY	A	B	C	D
LPV DA	3510-1 250 (300-1)			NA
LNAV MDA	4000-1	740 (800-1)	4000-2 740 (800-1)	NA
CIRCLING	4000-1	722 (800-1)	4000-2 722 (800-1)	NA

OGALLALA, NEBRASKA
Amdt 1 09127

41° 07' N-101° 46' W

RNAV (GPS) RWY 8