

MAPLETON, IOWA

AL-6069 (FAA)

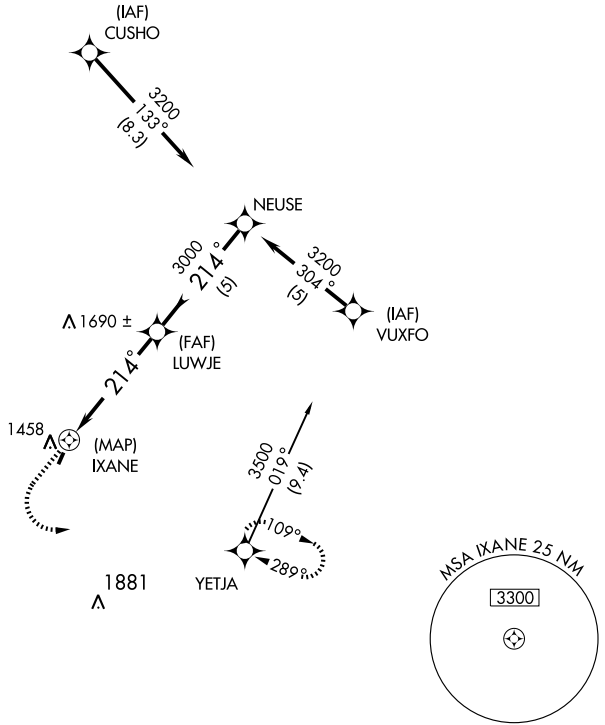
GPS RWY 20

MAPLETON/ JAMES G. WHITING MEMORIAL FIELD (MEY)

APP CRS 214°	Rwy Idg 2801
	TDZE 1116
	Apt Elev 1116

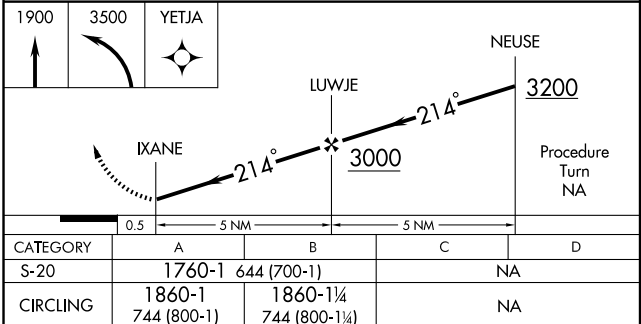
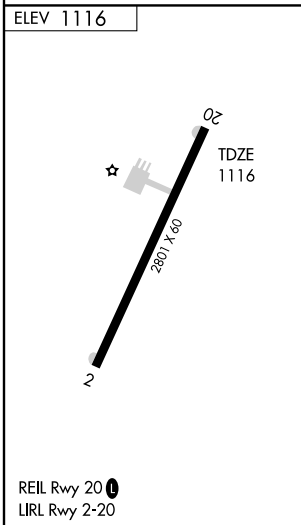
<p>▼ Use Sioux City altimeter setting.</p> <p>▲ NA</p>	<p>MISSED APPROACH: Climb to 1900 then climbing left turn to 3500 direct YETJA WP and hold.</p>
--	---

<p>SIoux CITY APP CON ★</p> <p>124.6 307</p>	<p>UNICOM</p> <p>122.8 (CTAF) 1</p>
---	---



NC-3, 22 OCT 2009 to 19 NOV 2009

NC-3, 22 OCT 2009 to 19 NOV 2009



MAPLETON, IOWA
Orig 06355

MAPLETON/ JAMES G. WHITING MEMORIAL FIELD (MEY)
42°11'N-95°48'W

GPS RWY 20