

MAPLETON, IOWA

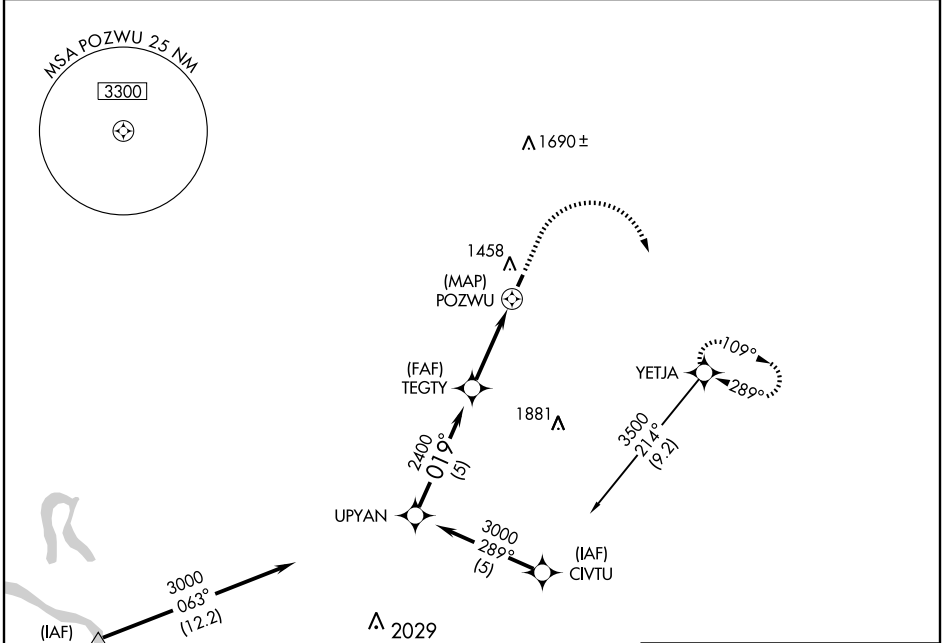
AL-6069 (FAA)

# GPS RWY 2

MAPLETON/JAMES G. WHITING MEMORIAL FIELD (MEY)

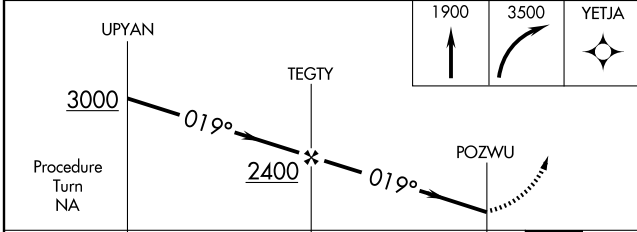
APP CRS <b>019°</b>	Rwy Idg TDZE Apt Elev	<b>2801</b> <b>1116</b> <b>1116</b>
------------------------	-----------------------------	---

NA Use Sioux City altimeter setting.	MISSED APPROACH: Climb to 1900, then climbing right turn to 3500 direct YETJA WP and hold.
SIoux CITY APP CON ★ <b>124.6 307</b>	UNICOM <b>122.8 (CTAF) 0</b>



NC-3, 22 OCT 2009 to 19 NOV 2009

NC-3, 22 OCT 2009 to 19 NOV 2009



	5 NM		3.5 NM		0.5
CATEGORY	A	B	C	D	
S-2	1760-1	644 (700-1)	NA		
CIRCLING	1860-1 744 (800-1)	1860-1¼ 744 (800-1¼)	NA		

ELEV 1116

REIL Rwy 20 0  
URL Rwy 2-20

MAPLETON, IOWA  
Orig 07242

MAPLETON/JAMES G. WHITING MEMORIAL FIELD (MEY)  
42°11'N-95°48'W

# GPS RWY 2