

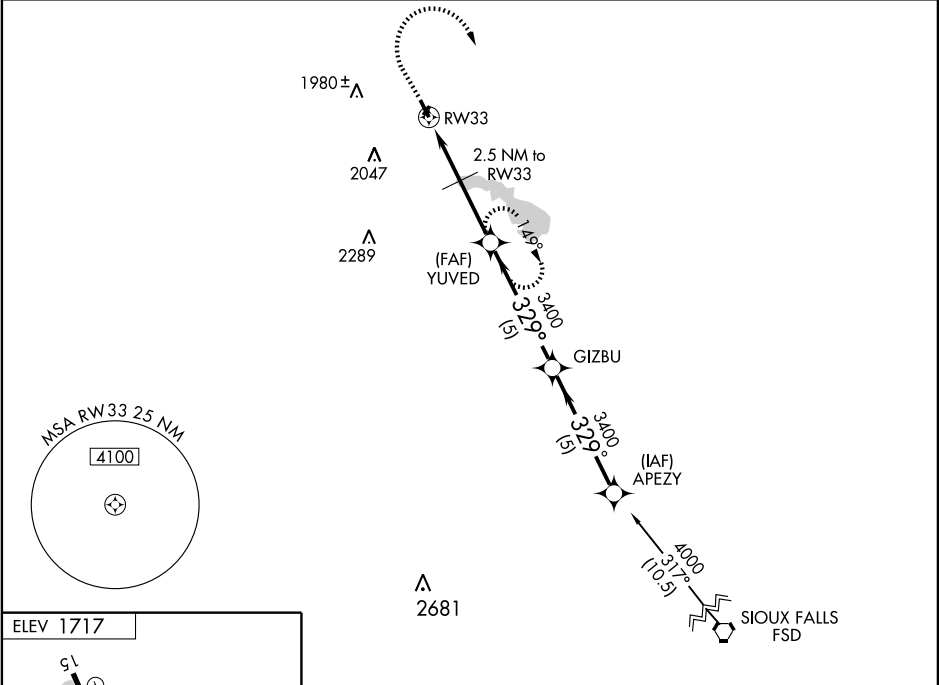
GPS RWY 33
MADISON MUNI (MDS)

APP CRS 329°	Rwy Idg 5000
	TDZE 1714
	Apt Elev 1717

NA Category D Circling not authorized west of Rwy 15-33. Obtain local altimeter setting on CTAF; when not received, use Brookings altimeter setting.

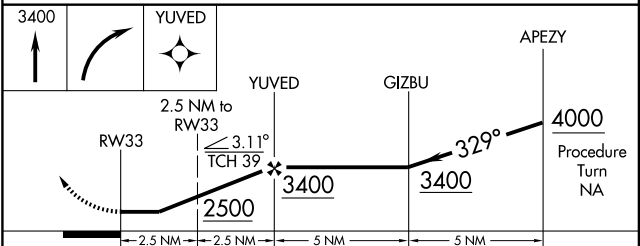
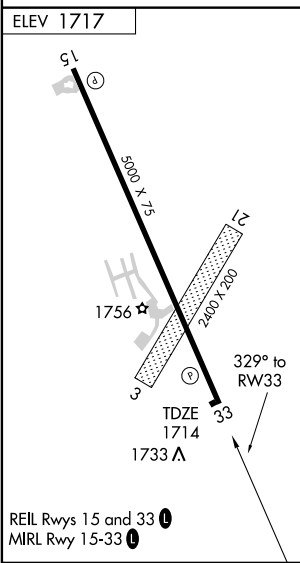
MISSED APPROACH: Climb to 3400 then right turn direct YUVED WP and hold.

AWOS-3 118.35	MINNEAPOLIS CENTER 132.05 317.4	UNICOM 122.8 (CTAF)
------------------	---	-------------------------------



NC-1, 22 OCT 2009 to 19 NOV 2009

NC-1, 22 OCT 2009 to 19 NOV 2009



CATEGORY	A		B		C		D	
S-33	2140-1	426 (500-1)			2140-1 ¼	426 (500-1 ¼)		
CIRCLING	2220-1	503 (600-1)			2220-1 ½ 503 (600-1 ½)		2280-2 563 (600-2)	
BROOKINGS ALTIMETER SETTING MINIMUMS								
S-33	2200-1	486 (500-1)			2200-1 ¼ 486 (500-1 ¼)		2200-1 ½ 486 (500-1 ½)	
CIRCLING	2280-1	563 (600-1)			2280-1 ½ 563 (600-1 ½)		2280-2 563 (600-2)	