

RICHMOND, VIRGINIA

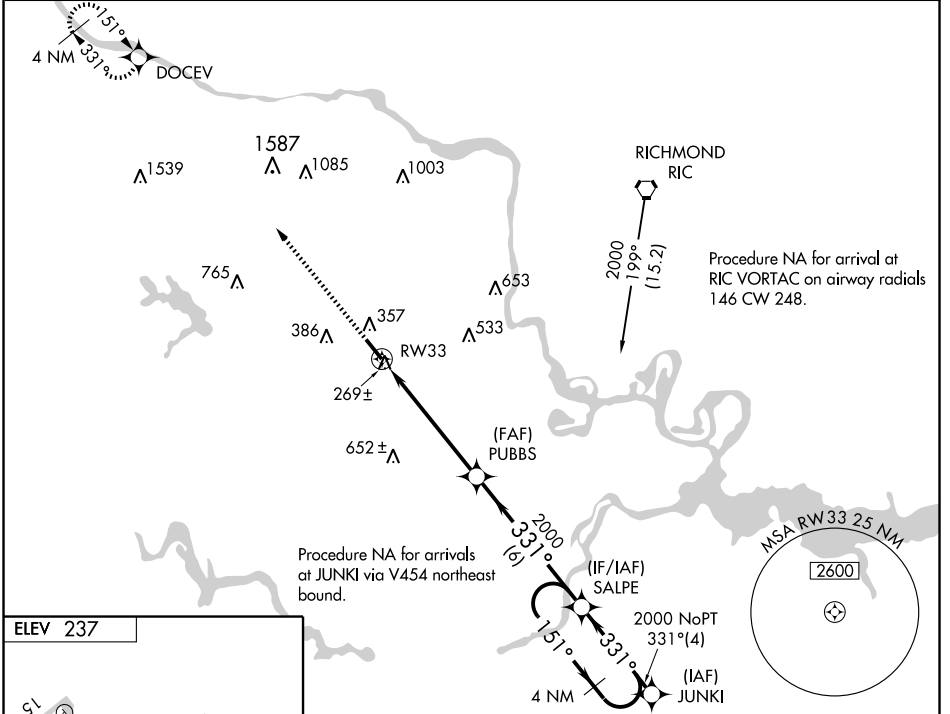
AL-6066 (FAA)

WAAS CH 56221 W33A	APP CRS 331°	Rwy Idg TDZE Apt Elev	5500 218 237
--	------------------------	-----------------------------	---

RNAV (GPS) RWY 33

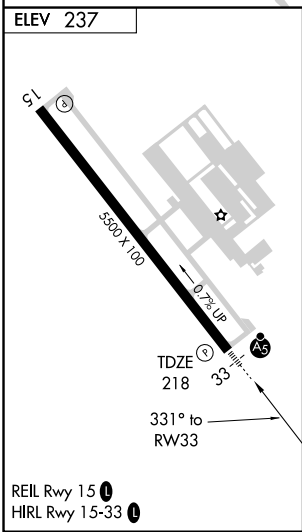
RICHMOND/CHESTERFIELD COUNTY (F'CI)

<p>▼ For inoperative MALSR increase LPV all Cats visibility to 1. If local altimeter setting not received, use Richmond Intl altimeter setting and increase all DAs/MDAs 40 feet. VDP and Baro-VNAV NA when using Richmond Intl altimeter setting. For uncompensated Baro-VNAV systems LNAV/VNAV NA below -1.5°C (5°F) or above 48°C (118°F). DME/DME RNP-0.3 NA.</p> <p>▲ NA</p>	<p>MALSR</p>	<p>MISSED APPROACH: Climb to 3000 direct DOCEV and hold.</p>	
<p>AWOS-3 128.625</p>	<p>POTOMAC APP CON 134.7 307.2</p>	<p>CLNC DEL 124.6</p>	<p>UNICOM 123.050 (CTAF) ①</p>



NE-3, 22 OCT 2009 to 19 NOV 2009

NE-3, 22 OCT 2009 to 19 NOV 2009



3000	DOCEV	VGS1 and RNAV glidepath not coincident.		4 NM Holding Pattern
		PUBBS	SALPE	
<p>*1.5 NM to RW33</p> <p>*LNAV only</p>		<p>331°</p> <p>2000</p>	<p>151°</p> <p>2000</p>	<p>GS 3.00°</p> <p>TCH 49</p>
CATEGORY	A	B	C	D
LPV DA	511-1/2		293 (300-1/2)	
LNAV/VNAV DA	599-1		381 (400-1)	
LNAV MDA	720-1/2	502 (500-1/2)	720-1	502 (500-1)
CIRCLING	720-1	483 (500-1)	720-1/2 483 (500-1/2)	800-2 563 (600-2)

RICHMOND, VIRGINIA
Orig-A 08325

RICHMOND/CHESTERFIELD COUNTY (F'CI)
37°24'N - 77°32'W
RNAV (GPS) RWY 33