

LOC/DME I-CFU 108.3 Chan 20	APP CRS 331°	Rwy Idg TDZE Apt Elev 5500 218 237
--	------------------------	--

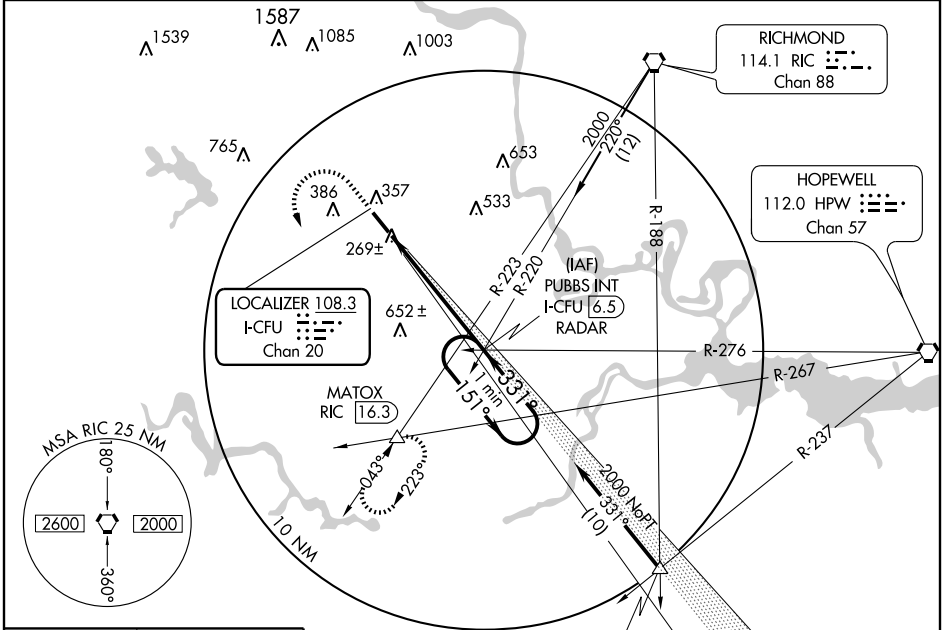
ILS or LOC RWY 33

RICHMOND/CHESTERFIELD COUNTY (FCI)

▼ For inoperative MALSR, increase S-LOC 33 visibility Cat D to 1. If local altimeter setting not received, use Richmond Infil altimeter setting and increase all DAs/MDAs 40 feet. VDP NA when using Richmond Infil altimeter setting.

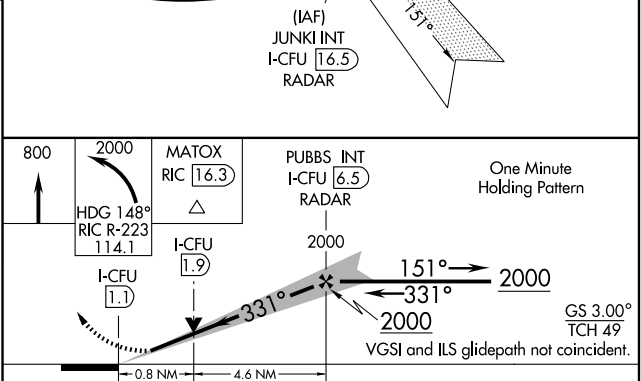
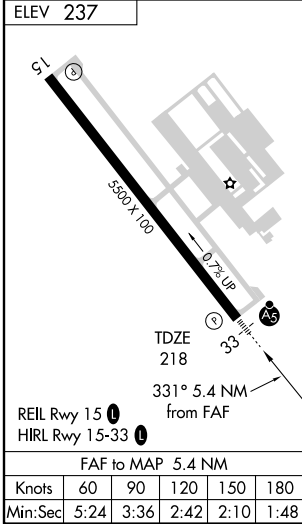
MALSR MISSED APPROACH: Climb to 800, then climbing left turn to 2000 via heading 148° and RIC R-223 to MATOX INT/RIC 16.3 DME and hold.

AWOS-3 128.625	POTOMAC APP CON 134.7 307.2	CLNC DEL 124.6	UNICOM 123.050 (CTAF) ①
--------------------------	---------------------------------------	--------------------------	--



NE-3, 22 OCT 2009 to 19 NOV 2009

NE-3, 22 OCT 2009 to 19 NOV 2009



CATEGORY	A	B	C	D
S-ILS 33	418-½ 200 (200-½)			
S-LOC 33	520-½ 302 (300-½)		520-¾ 302 (300-¾)	
CIRCLING	720-1 483 (500-1)		720-1½ 800-2 483 (500-1½) 563 (600-2)	