

WAPAKONETA, OHIO

AL-6065 (FAA)

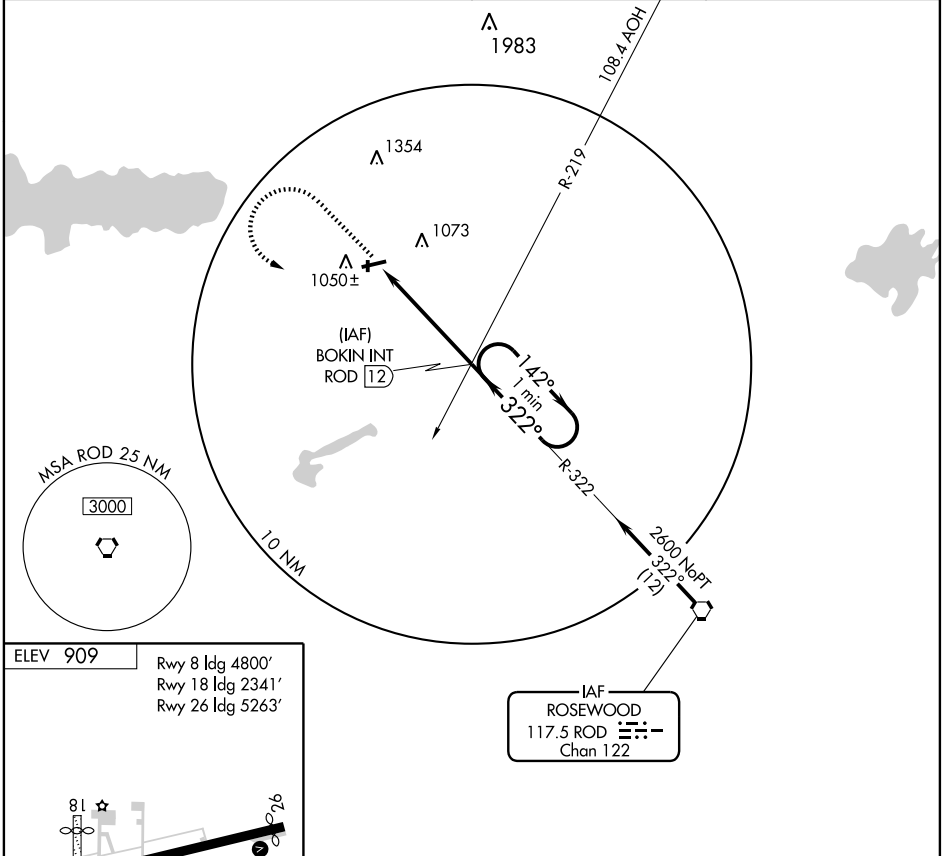
VOR-A

WAPAKONETA/ NEIL ARMSTRONG (AXV)

VORTAC ROD 117.5 Chan 122	APP CRS 322°	Rwy Idg TDZE Apt Elev	N/A N/A 909
---	------------------------	-----------------------------	--

MISSED APPROACH: Climb to 3000 then left turn via ROD R-322 to BOKIN Int/ROD 12 DME and hold.

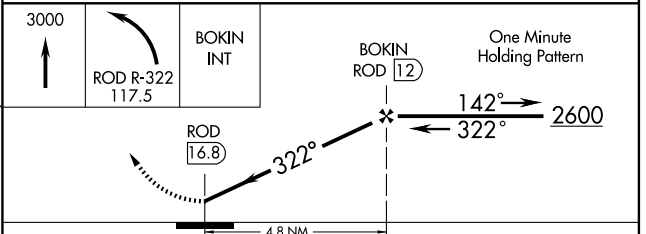
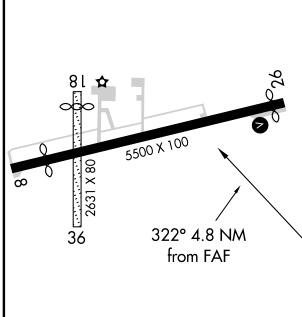
AWOS-3 128.325	DAYTON APP CON 118,425 294.5	UNICOM 122.8 (CTAF)	122.7 0
--------------------------	--	-------------------------------	-----------------------



EC-2, 22 OCT 2009 to 19 NOV 2009

EC-2, 22 OCT 2009 to 19 NOV 2009

ELEV 909	Rwy 8 ldg 4800'
	Rwy 18 ldg 2341'
	Rwy 26 ldg 5263'



FAF to MAP 4.8 NM					
Knots	60	90	120	150	180
Min:Sec	4:48	3:12	2:24	1:55	1:36
CATEGORY	A	B	C	D	
CIRCLING	1400-1 491 (500-1)	1440-1 531 (600-1)	1440-1½ 531 (600-1½)	NA	

WAPAKONETA, OHIO
Amdt 7B 09295

WAPAKONETA/ NEIL ARMSTRONG (AXV)

40°30'N - 84°18'W

VOR-A