

WAAS CH 72907 W26A	APP CRS 261°	Rwy ldg 5263 TDZE 910 Apt Elev 913
--	------------------------	---

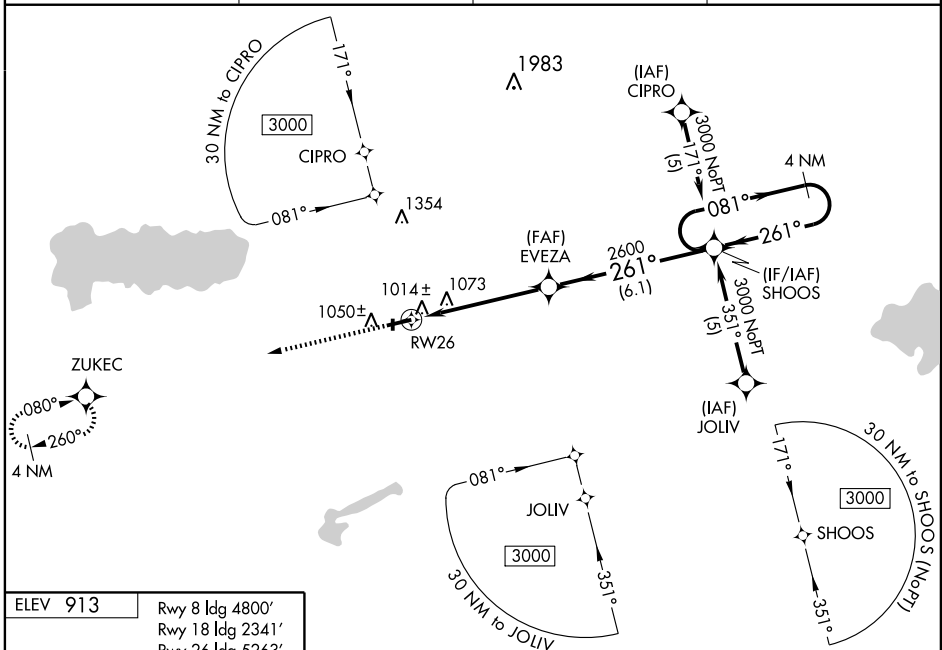
RNAV (GPS) RWY 26

WAPAKONETA/ NEIL ARMSTRONG (AXV)

NA Baro-VNAV NA when using Lima altimeter setting. DME/DME RNP-0.3 NA. For uncompensated Baro-VNAV systems, LNAV/VNAV NA below -16°C (4°F) or above 54°C (130°F). Visibility reduction by helicopters NA. When local altimeter setting not received, use Lima altimeter setting and increase LPV DA to 1291, LNAV/VNAV DA to 1324, and all MDA 60 feet, increase LNAV/VNAV visibility all Cats ¼ mile.

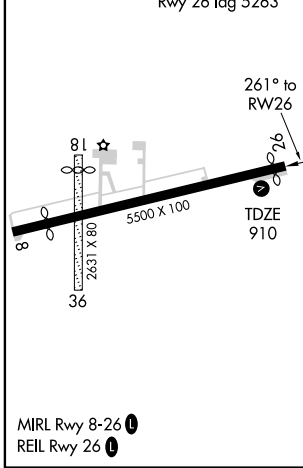
MISSED APPROACH: Climb to 3000 direct ZUKEC and hold.

AWOS-3 128.325	DAYTON APP CON 118.425 294.5	UNICOM 122.8 (CTAF)	122.7
--------------------------	--	-------------------------------	--------------



EC-2, 22 OCT 2009 to 19 NOV 2009

EC-2, 22 OCT 2009 to 19 NOV 2009



3000	ZUKEC	SHOOS	4 NM Holding Pattern	
↑	✧			
261° to RWY 26	EVEZA	261°	081° → 3000	
RWY 26	2600	← 261°	GS 3.00° TCH 40	
5.1 NM	6.1 NM			
CATEGORY	A	B	C	D
LPV DA	1241-1¼	331 (400-1¼)		NA
LNAV/VNAV DA	1274-1¼	364 (400-1¼)		NA
LNAV MDA	1440-1	530 (600-1)	1440-1½ 530 (600-1½)	NA
CIRCLING	1440-1	527 (600-1)	1440-1½ 527 (600-1½)	NA