

MINDEN, LOUISIANA

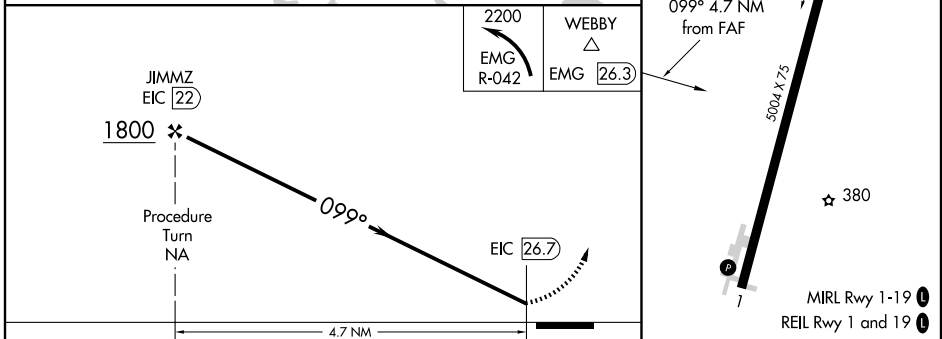
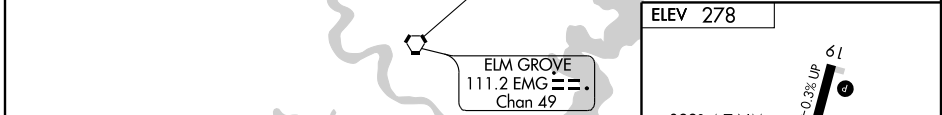
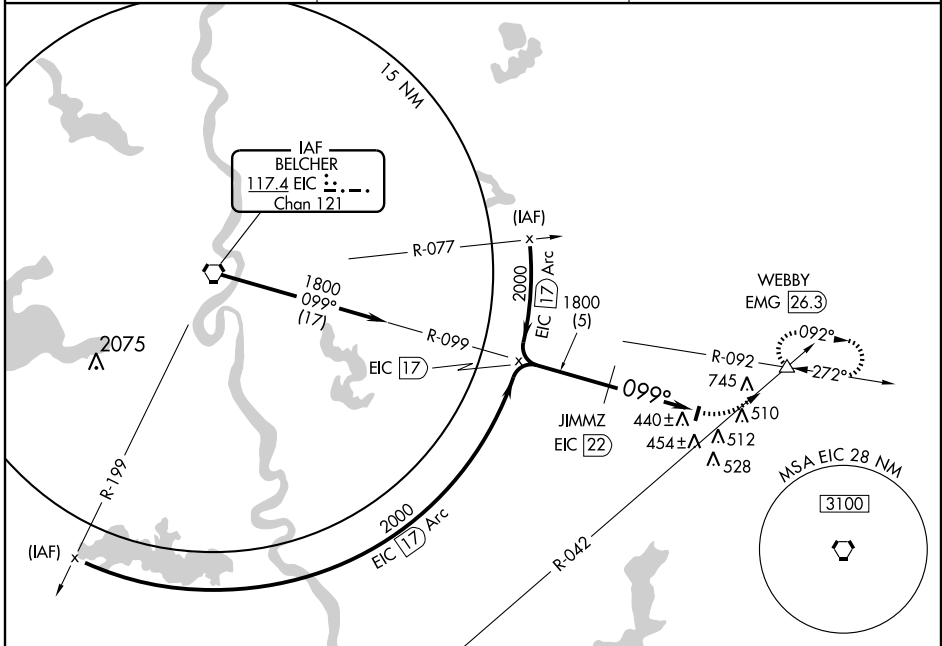
AL-6064 (FAA)

VORTAC EIC <b>117.4</b> Chan 121	APP CRS <b>099°</b>	Rwy Idg TDZE Apt Elev	<b>N/A</b> <b>N/A</b> <b>278</b>
--	------------------------	-----------------------------	--

**VOR/DME-A**  
MINDEN-WEBSTER (F24)

<b>▲ NA</b> Use Barksdale AFB altimeter setting.	MISSED APPROACH: Climbing left turn to 2200 via EMG VOR/DME R-042 to WEBBY Int and hold.
--	--

SHREVEPORT APP CON <b>118.6 350.2</b>	GCO <b>135.075</b>	UNICOM <b>122.8 (CTAF) 0</b>
--	-----------------------	---------------------------------



CATEGORY	A	B	C	D	Knots	60	90	120	150	180
CIRCLING	1540-1¼ 1262 (1300-1¼)	1540-1½ 1262 (1300-1½)	1540-3	1262 (1300-3)	Min:Sec					

MINDEN, LOUISIANA  
Amdt 4A 08045

32° 39' N - 93° 18' W

MINDEN-WEBSTER (F24)  
**VOR/DME-A**

SC-4, 22 OCT 2009 to 19 NOV 2009

SC-4, 22 OCT 2009 to 19 NOV 2009