

MINDEN, LOUISIANA

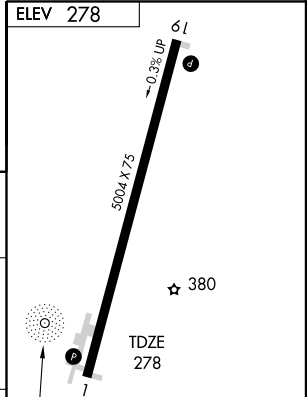
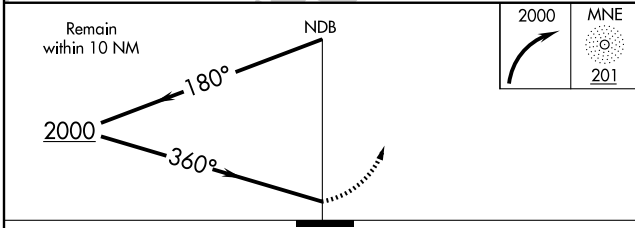
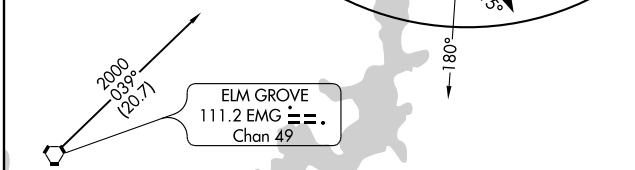
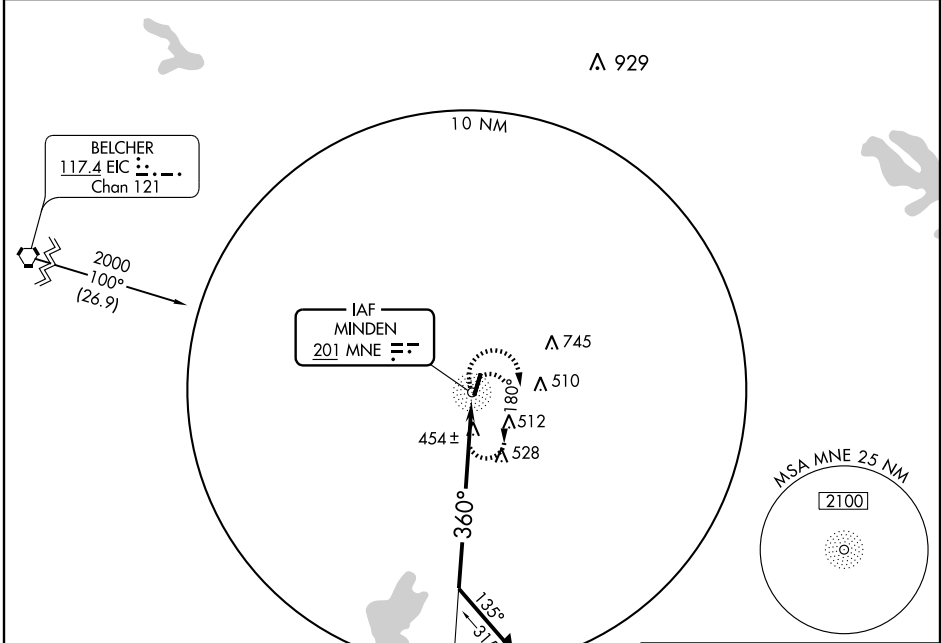
AL-6064 (FAA)

NDB MNE 201	APP CRS 360°	Rwy Idg TDZE Apt Elev	5004 278 278
-----------------------	------------------------	-----------------------------	---

NDB RWY 1
MINDEN-WEBSTER (F24)

NA Use Barksdale AFB altimeter setting. MISSED APPROACH: Climbing right turn to 2000 in MNE NDB holding pattern.

SHREVEPORT APP CON 118.6 350.2	GCO 135.075	UNICOM 122.8 (CTAF) 0
--	-----------------------	--



CATEGORY	A	B	C	D
S-1	960-1	682 (700-1)	960-2 682 (700-2)	960-2½ 682 (700-2½)
CIRCLING	960-1	682 (700-1)	960-2 682 (700-2)	960-2½ 682 (700-2½)

Knots	60	90	120	150	180
Min:Sec					

MINDEN, LOUISIANA
Amdt 2 08045

32° 39' N - 93° 18' W

MINDEN-WEBSTER (F24)
NDB RWY 1

SC-4, 22 OCT 2009 to 19 NOV 2009

SC-4, 22 OCT 2009 to 19 NOV 2009