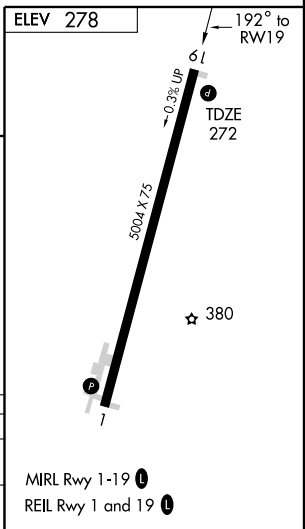
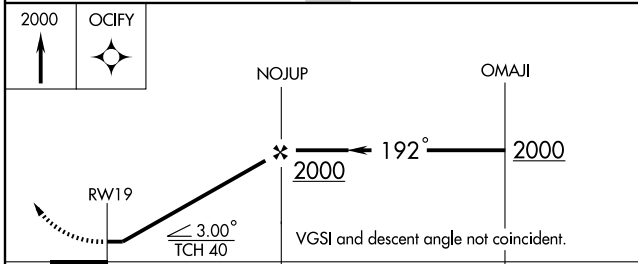
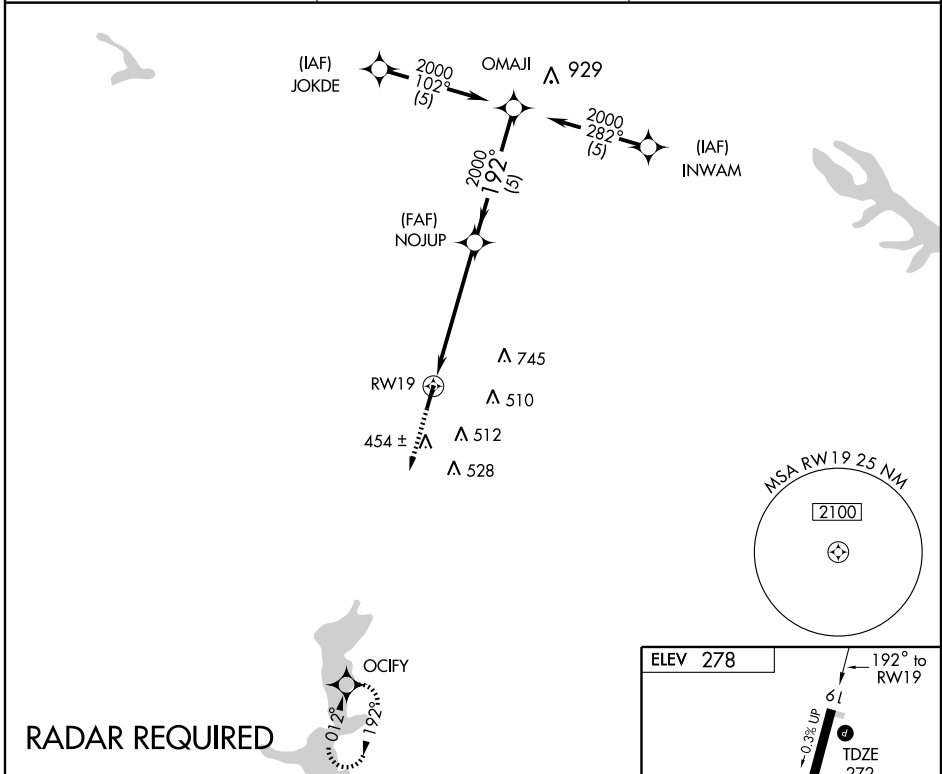


GPS RWY 19
MINDEN-WEBSTER (F24)

APP CRS	Rwy Idg	5004
192°	TDZE	272
	Apt Elev	278

▲ NA Use Barksdale AFB altimeter setting. MISSED APPROACH: Climb to 2000 direct OCIFY RWP and hold.

SHREVEPORT APP CON 118.6 350.2	GCO 135.075	UNICOM 122.8 (CTAF) 0
--	-----------------------	---------------------------------



CATEGORY	A	B	C	D
S-19	700-1 428 (500-1)		700-1¼ 428 (500-1¼)	700-1½ 428 (500-1½)
CIRCLING	800-1 522 (600-1)	880-1 602 (700-1)	880-1¾ 602 (700-1¾)	880-2 602 (700-2)

SC-4, 22 OCT 2009 to 19 NOV 2009

SC-4, 22 OCT 2009 to 19 NOV 2009