

RNAV (GPS) RWY 2

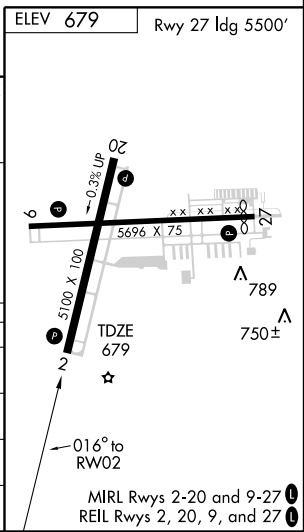
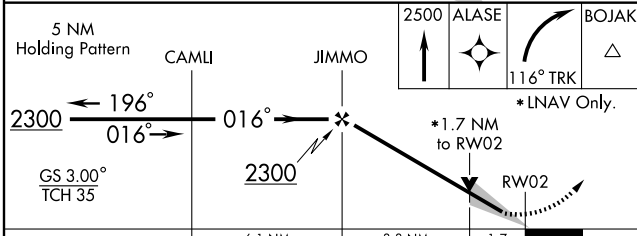
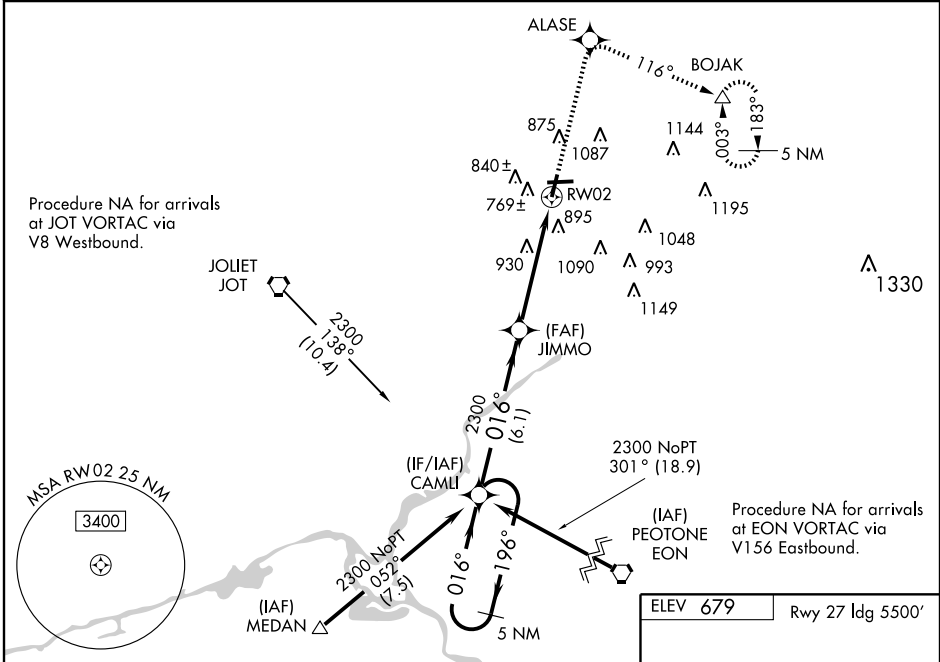
CHICAGO/LEWIS UNIVERSITY (L.O.T)

WAAS CH 65704 W02A	APP CRS 016°	Rwy ldg 5100 TDZE 679 Apt Elev 679
--	------------------------	---

▼ For inoperative MALSR, increase LNAV Cat. A and B visibility to 1 mile. VDP NA when using Joliet Rgnl altimeter setting. Baro-VNAV NA when using Joliet Rgnl altimeter setting. If local altimeter setting not received, use Joliet Rgnl altimeter setting and increase all DAs 29 feet and all MDAs 40 feet. For uncompensated Baro-VNAV systems, LNAV/VNAV NA below -16°C (4°F) or above 47°C (116°F). DME/DME RNP-0.3 NA.

MISSED APPROACH:
Climb to 2500 direct ALASE and right turn via 116 track to BOJAK and hold.

AWOS-3 118.525	CHICAGO APP CON 119.35 388.0	UNICOM 122.8 (CTAF)
--------------------------	--	-------------------------------



CATEGORY	A	B	C	D
LPV DA	929-3/4 250 (300-3/4)			
LNAV/VNAV DA	1256-1 1/2 577 (600-1 1/2)			
LNAV MDA	1240-3/4 561 (600-3/4)	1240-1 561 (600-1)	1240-1 1/4 561 (600-1 1/4)	
CIRCLING	1260-1 581 (600-1)	1260-1 1/2 581 (600-1 1/2)	1440-2 1/2 761 (800-2 1/2)	

EC-3, 22 OCT 2009 to 19 NOV 2009

EC-3, 22 OCT 2009 to 19 NOV 2009