

LAKE VILLAGE, ARKANSAS

AL-6062 (FAA)

VOR/DME-B

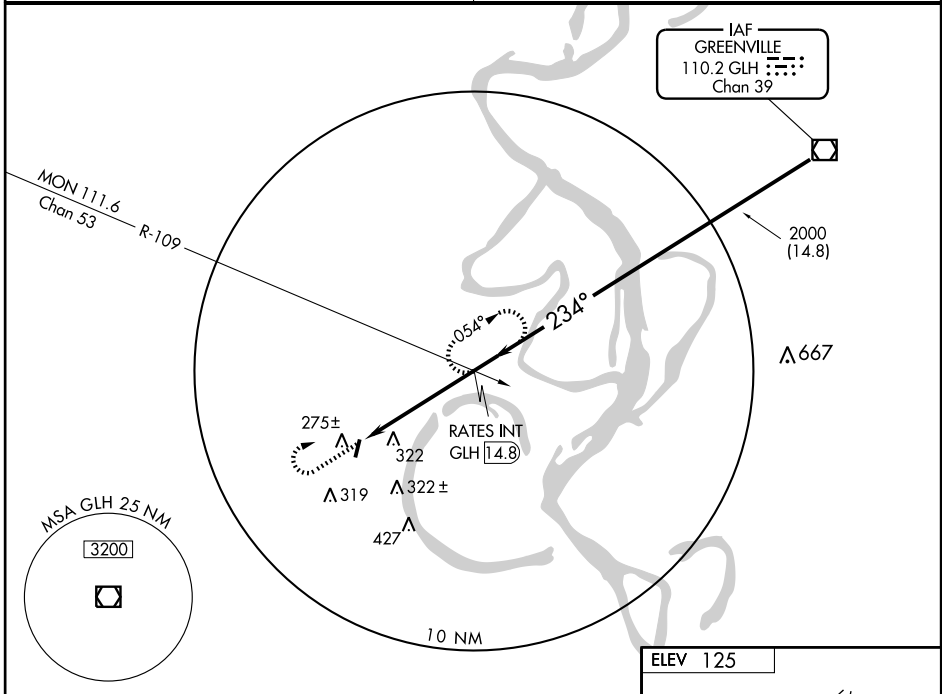
LAKE VILLAGE MUNI (M32)

VOR/DME GLH 110.2 Chan 39	APP CRS 234°	Rwy Idg TDZE Apt Elev	N/A N/A 125
---	------------------------	-----------------------------	--

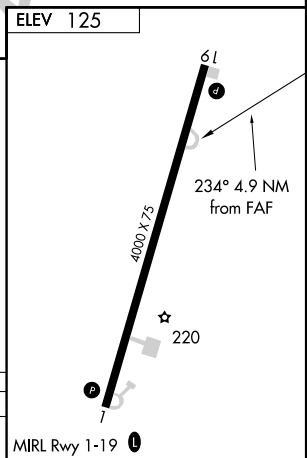
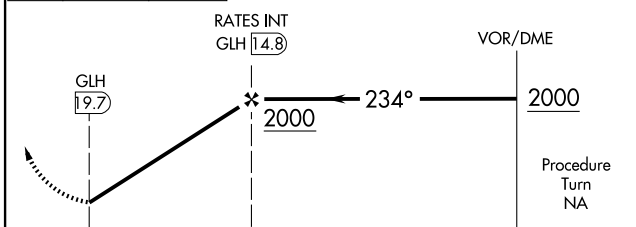
▲ NA Use Greenville, MS altimeter setting, when not available use Greenwood, MS altimeter setting. Circling not authorized East of runway 1-19.

MISSED APPROACH: Climb to 2000 then right turn via GLH R-234 to RATES Int/14.8 DME and hold.

MEMPHIS CENTER 135.875 269.35	CTAF 122.90
---	-----------------------



2000 ↑	GLH R-234	RATES INT GLH 14.8
-----------	-----------	-----------------------



CATEGORY	A	B	C	D
CIRCLING	680-1 555 (600-1)		680-1½ 555 (600-1½)	680-2 555 (600-2)
GREENWOOD, MS ALTIMETER SETTING MINIMUMS				
CIRCLING	780-1 655 (700-1)		780-1¾ 655 (700-1¾)	780-2 655 (700-2)

Knots	60	90	120	150	180
Min:Sec					

LAKE VILLAGE, ARKANSAS
Amdt 5 09071

33°21'N-91°19'W

VOR/DME-B

LAKE VILLAGE MUNI (M32)

SC-1, 22 OCT 2009 to 19 NOV 2009

SC-1, 22 OCT 2009 to 19 NOV 2009