

LAKE VILLAGE, ARKANSAS

AL-6062 (FAA)

VOR/DME MON 111.6 Chan 53	APP CRS 119°	Rwy Idg TDZE Apt Elev N/A N/A 125
---	------------------------	---

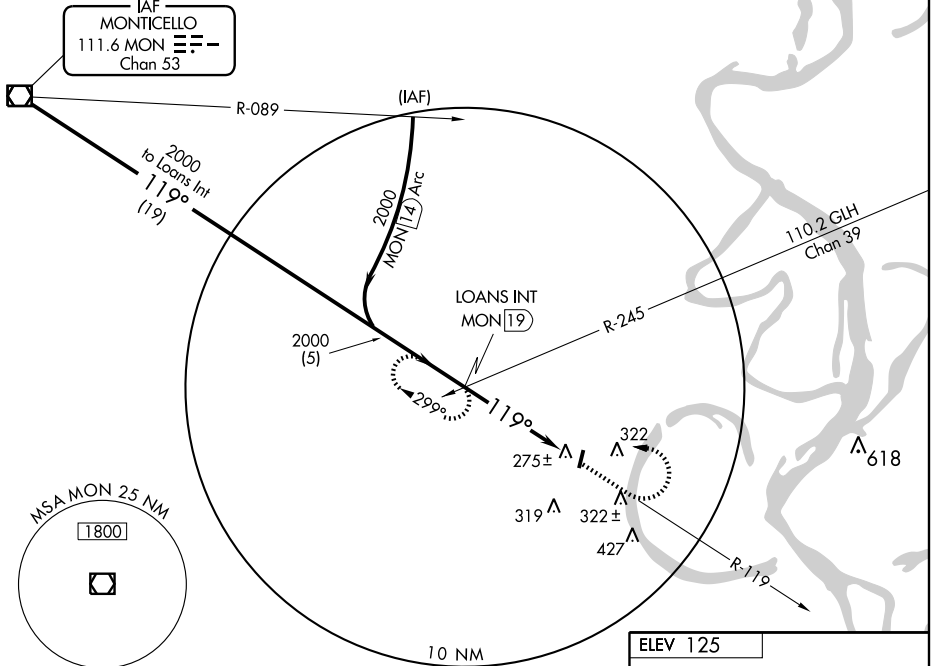
VOR-A
LAKE VILLAGE MUNI (M32)

▲ NA Use Greenville, MS (Mid Delta Rgnl) altimeter setting, when not available use Greenwood, MS altimeter setting. Circling not authorized East of runway 1-19.

MISSED APPROACH: Climb to 2000 then left turn via MON R-119 to LOANS Int and hold.

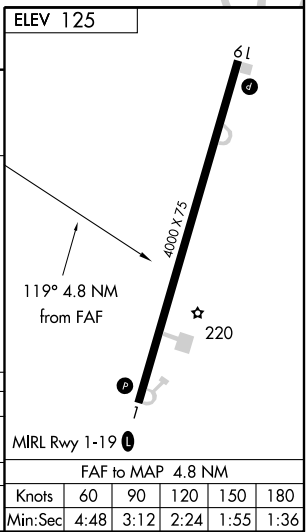
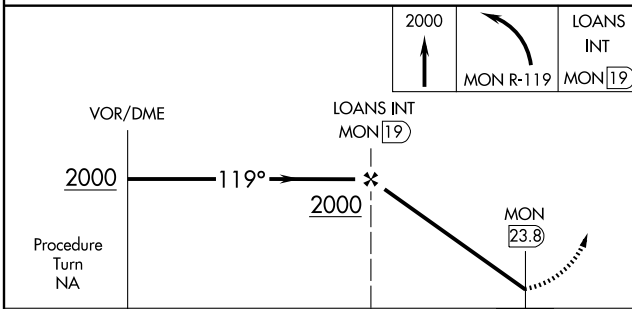
MEMPHIS CENTER
135.875 269.35

CTAF
122.90



SC-1, 22 OCT 2009 to 19 NOV 2009

SC-1, 22 OCT 2009 to 19 NOV 2009



CATEGORY	A		B		C		D	
	680-1	680-1¼	680-1½	680-1¾	680-2	680-2¼	680-2½	680-2¾
CIRCLING	555 (600-1)	555 (600-1¼)	555 (600-1½)	555 (600-1¾)	555 (600-2)	555 (600-2¼)	555 (600-2½)	555 (600-2¾)
GREENWOOD, MS ALTIMETER SETTING MINIMUMS								
CIRCLING	780-1	780-1¼	780-1½	780-1¾	780-2	780-2¼	780-2½	780-2¾
	655 (700-1)	655 (700-1¼)	655 (700-1½)	655 (700-1¾)	655 (700-2)	655 (700-2¼)	655 (700-2½)	655 (700-2¾)

LAKE VILLAGE, ARKANSAS
Amdt 7 09071

33°21'N-91°19'W

LAKE VILLAGE MUNI (M32)
VOR-A

Knots	60	90	120	150	180
	Min:Sec	4:48	3:12	2:24	1:55