

GPS RWY 19

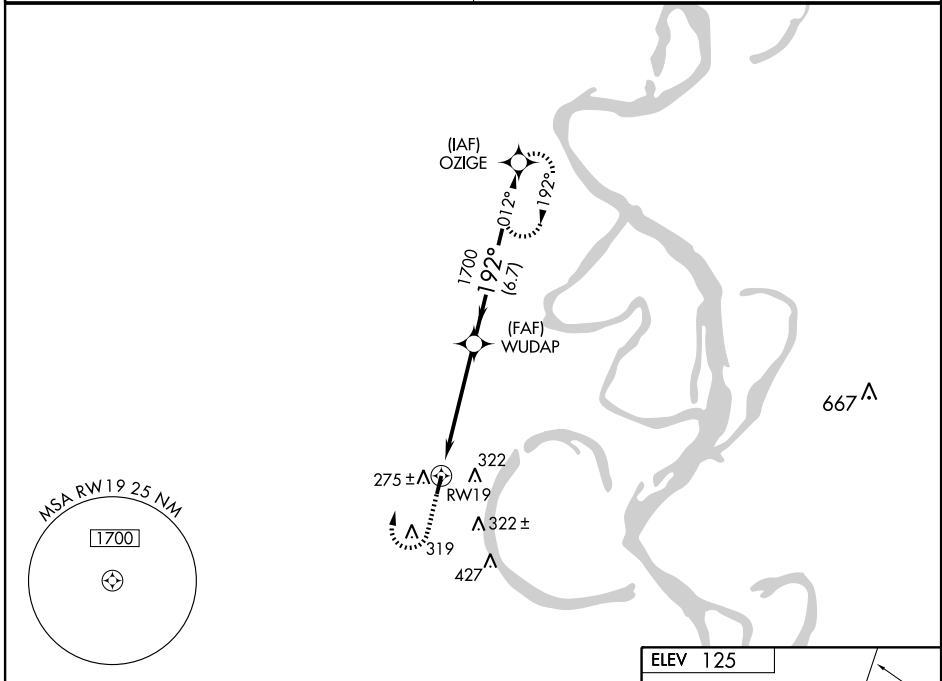
LAKE VILLAGE MUNI (M32)

APP CRS	Rwy Idg	4000
192°	TDZE	123
	Apt Elev	125

▲ NA Use Greenville, MS (Mid Delta Rgnl) altimeter setting, when not available use Greenwood, MS altimeter setting. Circling not authorized East of runway 1-19.

MISSED APPROACH: Climb to 1000 then climbing right turn to 2000 direct OZIGE WP and hold.

MEMPHIS CENTER 135.875 269.35	CTAF 122.90
---	-----------------------



SC-1, 22 OCT 2009 to 19 NOV 2009

SC-1, 22 OCT 2009 to 19 NOV 2009

1000	2000	OZIGE	
RW19		WUDAP	OZIGE
1700		192°	2000
5 NM		6.7 NM	Procedure Turn NA
CATEGORY	A	B	D
S-19	620-1	497 (500-1)	620-1½ 497 (500-1½)
CIRCLING	680-1	555 (600-1)	680-1½ 555 (600-1½)
GREENWOOD, MS ALTIMETER SETTING MINIMUMS			
S-19	740-1	617 (700-1)	740-2 617 (700-2)
CIRCLING	780-1	655 (700-1)	780-2 655 (700-2)

