

LARNED, KANSAS

AL-6059 (FAA)

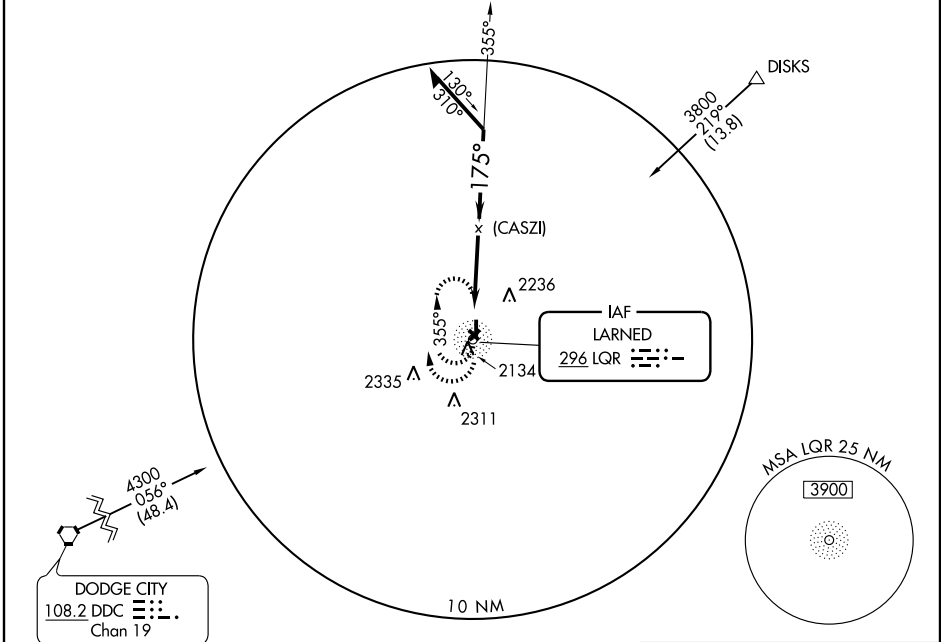
NDB or GPS RWY 17

LARNED-PAWNEE COUNTY (LQR)

NDB LQR 296	APP CRS 175°	Rwy Idg TDZE Apt Elev	4202 2011 2011
-----------------------	------------------------	-----------------------------	---

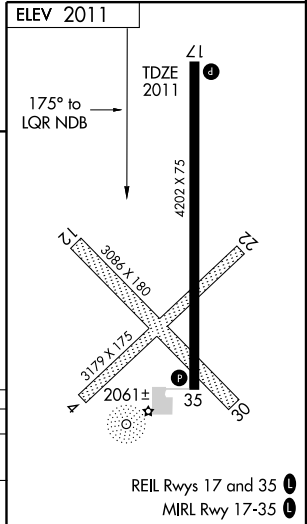
▲ NA Use Russell altimeter setting.	MISSED APPROACH: Climbing right turn to 3800 in LQR NDB holding pattern.
-------------------------------------	--

AWOS-3 119.875	KANSAS CITY CENTER 124.4 322.4	UNICOM 122.8 (CTAF)
--------------------------	--	-------------------------------



NC-2, 22 OCT 2009 to 19 NOV 2009

NC-2, 22 OCT 2009 to 19 NOV 2009



CATEGORY	A	B	C	D
S-17	2820-1 809 (900-1)	2820-1¼ 809 (900-1¼)	2820-2¼ 809 (900-2¼)	NA
CIRCLING	2820-1 809 (900-1)	2820-1¼ 809 (900-1¼)	2820-2¼ 809 (900-2¼)	NA

REIL Rwy 17 and 35
MIRL Rwy 17-35

LARNED, KANSAS
Amdt 3 09183

38°13'N - 99°05'W

LARNED-PAWNEE COUNTY (LQR)

NDB or GPS RWY 17