

IOWA FALLS, IOWA

AL-6058 (FAA)

# RNAV (GPS) RWY 31

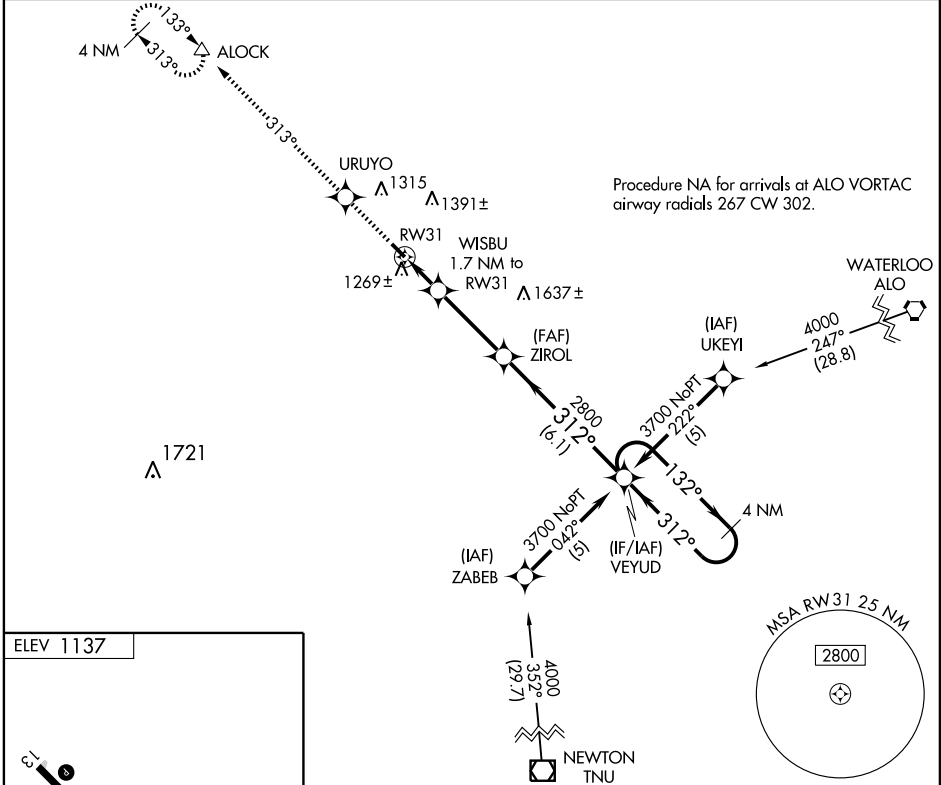
IOWA FALLS MUNI (IFA)

APP CRS	Rwy Idg	<b>4001</b>
<b>312°</b>	TDZE	<b>1137</b>
	Apt Elev	<b>1137</b>

**⚠** DME/DME RNP- 0.3 NA.  
**⚠** When local altimeter setting not received, use Webster City altimeter setting and increase all MDA 80 feet.  
 VDP NA when using Webster City altimeter setting.

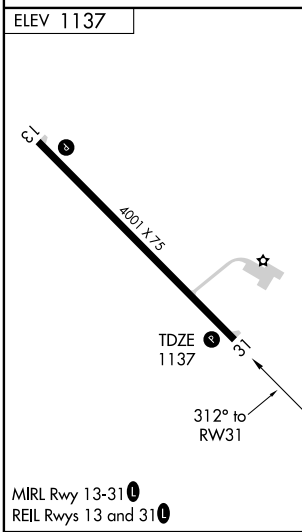
MISSED APPROACH: Climb to 4000 direct URUYO and via 313° track to ALOCK and hold, continue climb-in-hold to 4000.

AWOS <b>120.425</b>	WATERLOO APP CON* <b>118.9</b>	UNICOM <b>122.8 (CTAF) 0</b>
------------------------	-----------------------------------	---------------------------------



NC-3, 22 OCT 2009 to 19 NOV 2009

NC-3, 22 OCT 2009 to 19 NOV 2009



4000	URUYO	313° track	ALOCK	VEYUD	4 NM Holding Pattern
	WISBU	1.7 NM to RW31	ZIROL		
	RW31	1.1 NM to RW31	3.04° TCH 40	2800	132° → 3700
		1.1 NM	0.6 NM	3.3 NM	6.1 NM
CATEGORY	A	B	C	D	
LNAV MDA	1520-1	383 (400-1)		NA	
CIRCLING	1600-1	463 (500-1)		NA	

VGSI and descent angles not coincident.

IOWA FALLS, IOWA  
 Orig 90999

42°28'N-93°16'W

# IOWA FALLS MUNI (IFA) RNAV (GPS) RWY 31