

IOWA FALLS, IOWA

AL-6058 (FAA)

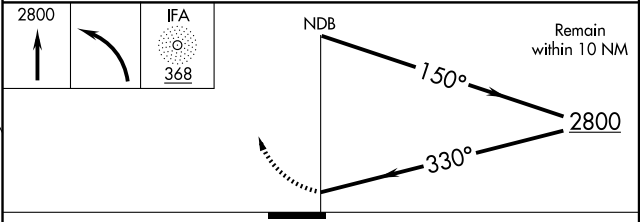
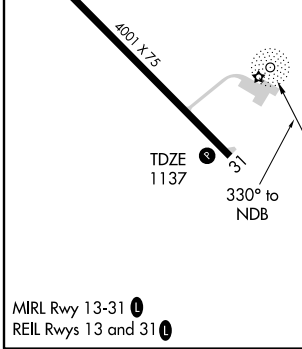
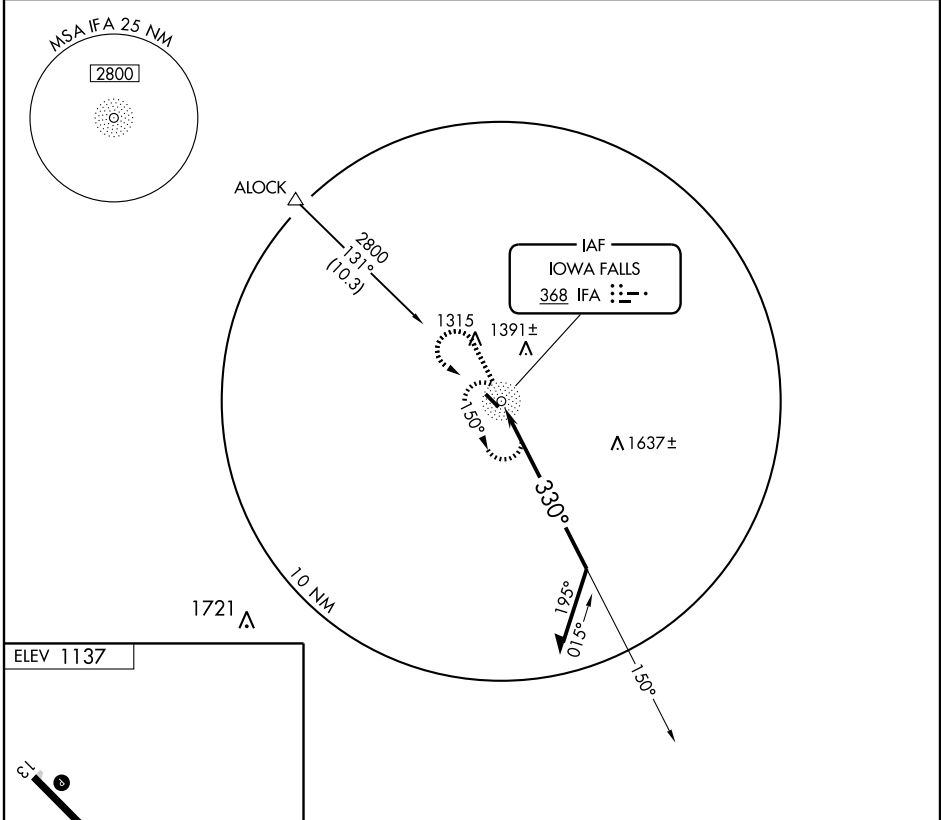
# NDB RWY 31

IOWA FALLS MUNI (IFA)

NDB IFA <b>368</b>	APP CRS <b>330°</b>	Rwy Idg TDZE Apt Elev	<b>4001</b> <b>1137</b> <b>1137</b>
-----------------------	------------------------	-----------------------------	---

**NA** When local altimeter setting not received, use Webster City altimeter setting and increase all MDA 80 feet. MISSED APPROACH: Climb to 2800 then left turn direct IFA NDB and hold.

AWOS <b>120.425</b>	WATERLOO APP CON ★ <b>118.9</b>	UNICOM <b>122.8 (CTAF)</b>
------------------------	------------------------------------	-------------------------------



CATEGORY	A	B	C	D
S-31	1720-1	583 (600-1)	NA	
CIRCLING	1720-1	583 (600-1)	NA	

IOWA FALLS, IOWA  
Amdt 5 09071

42°28'N-93°16'W

IOWA FALLS MUNI (IFA)  
**NDB RWY 31**

NC-3, 22 OCT 2009 to 19 NOV 2009

NC-3, 22 OCT 2009 to 19 NOV 2009