

WAAS CH 70413 W 32A	APP CRS 320°	Rwy Idg TDZE 782 Apt Elev 783	3899
---	------------------------	---	-------------

RNAV (GPS) RWY 32

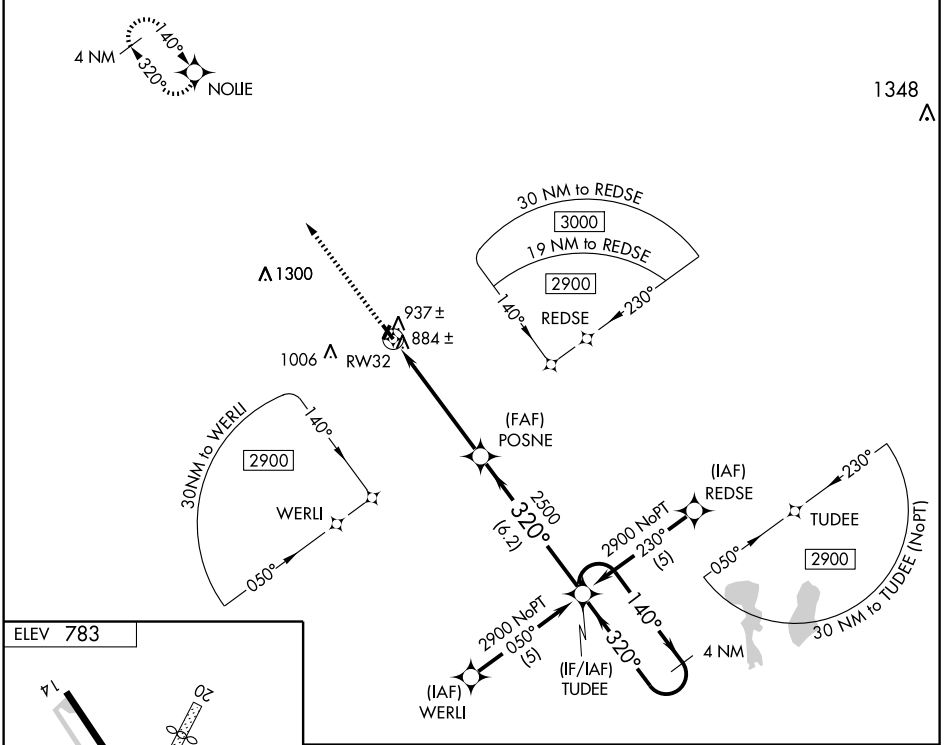
CHILLICOTHE MUNI (CHT)

▼ For uncompensated Baro-VNAV systems, LNAV/VNAV NA below -16°C (4°F) or above 54°C (130°F). DME/DME RNP-0.3 NA. Visibility reduction by helicopters NA. When local altimeter setting not received, use Kansas City Intl altimeter setting and increase all DA 181 feet and all MDA 200 feet, and increase LPV all Cats visibility ¾ mile and LNAV/VNAV all Cats visibility ½ mile. Baro-VNAV and VDP NA when using Kansas City Intl altimeter setting.

▲ NA

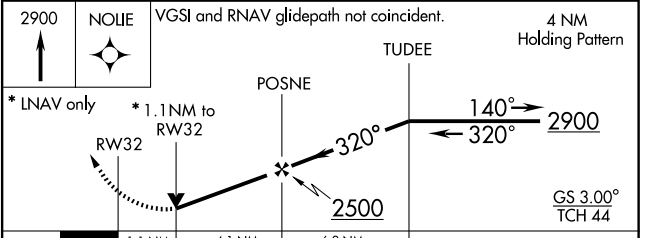
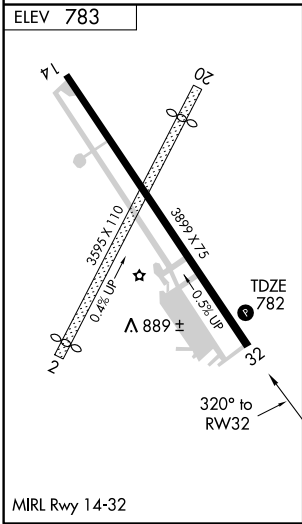
MISSED APPROACH:
Climb to 2900 direct NOLIE and hold.

AWOS-3 118.175	KANSAS CITY CENTER 125.25 381.5	UNICOM 122.8 (CTAF) 0
--------------------------	---	---------------------------------



NC-3, 22 OCT 2009 to 19 NOV 2009

NC-3, 22 OCT 2009 to 19 NOV 2009



CATEGORY	A	B	C	D
LPV DA	1148-1¼	366 (400-1¼)		NA
LNAV/VNAV DA	1154-1½	372 (400-1½)		NA
LNAV MDA	1200-1	418 (500-1)		NA
CIRCLING	1280-1	497 (500-1)		NA