

(SKOWL1.DOOZI) 09127

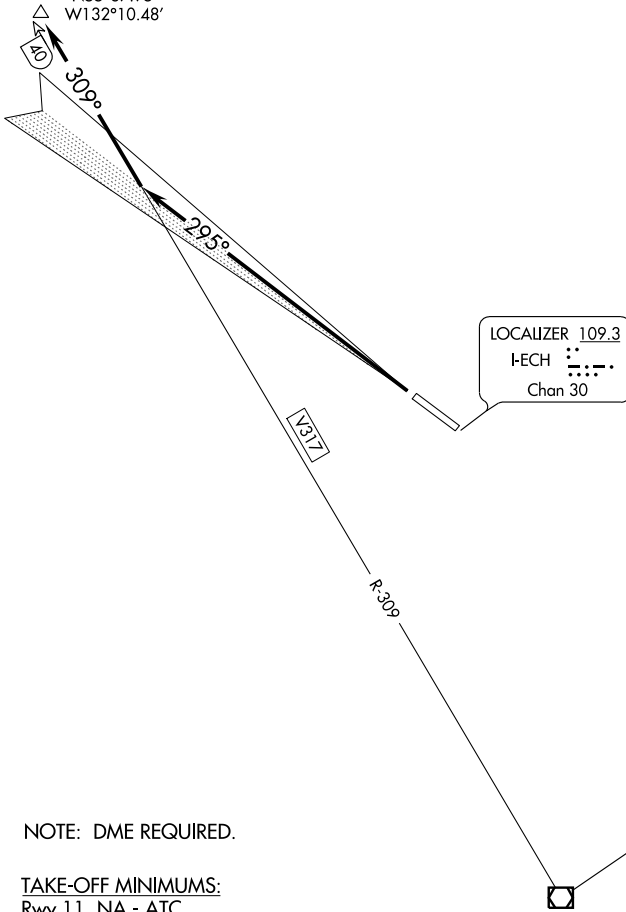
SL-6053 (FAA)

KETCHIKAN INTL (KTN)(PAKT)
KETCHIKAN, ALASKA

SKOWL ONE DEPARTURE (OBSTACLE)

DOOZI
N55°37.95'
W132°10.48'

ATIS★ 134.45
ANCHORAGE CENTER
118.5 284.6
CTAF 123.6
UNICOM 122.95



NOTE: DME REQUIRED.

TAKE-OFF MINIMUMS:

Rwy 11, NA - ATC.
Rwy 29, 400-1 1/4 with minimum climb of 380 feet
per NM to 5300.

TAKE-OFF OBSTACLES:

Rwy 29, Ships beginning 1933' from DER, 1004' right of centerline, up to 150' AGL/150' MSL. Multiple trees beginning 206' from DER, 513' left of centerline, up to 148' AGL/410' MSL.

NOTE: Chart not to scale.



DEPARTURE ROUTE DESCRIPTION

TAKE-OFF RUNWAY 29: Climb to assigned altitude via I-ECH Localizer NW course 295° to intercept/join ANN VOR/DME R-309/V317 to DOOZI/40 DME before proceeding on course.

SKOWL ONE DEPARTURE (OBSTACLE)

(SKOWL1.DOOZI) 09127

KETCHIKAN, ALASKA
KETCHIKAN INTL (KTN)(PAKT)

AK, 22 OCT 2009 to 17 DEC 2009

AK, 22 OCT 2009 to 17 DEC 2009