

KETCHIKAN, ALASKA

AL-6053 (FAA)

RNAV (GPS)-B KETCHIKAN INTL (KTN)(PAKT)

APP CRS 295°	Rwy Idg TDZE Apt Elev	N/A N/A 88
------------------------	-----------------------------	---------------------------------------

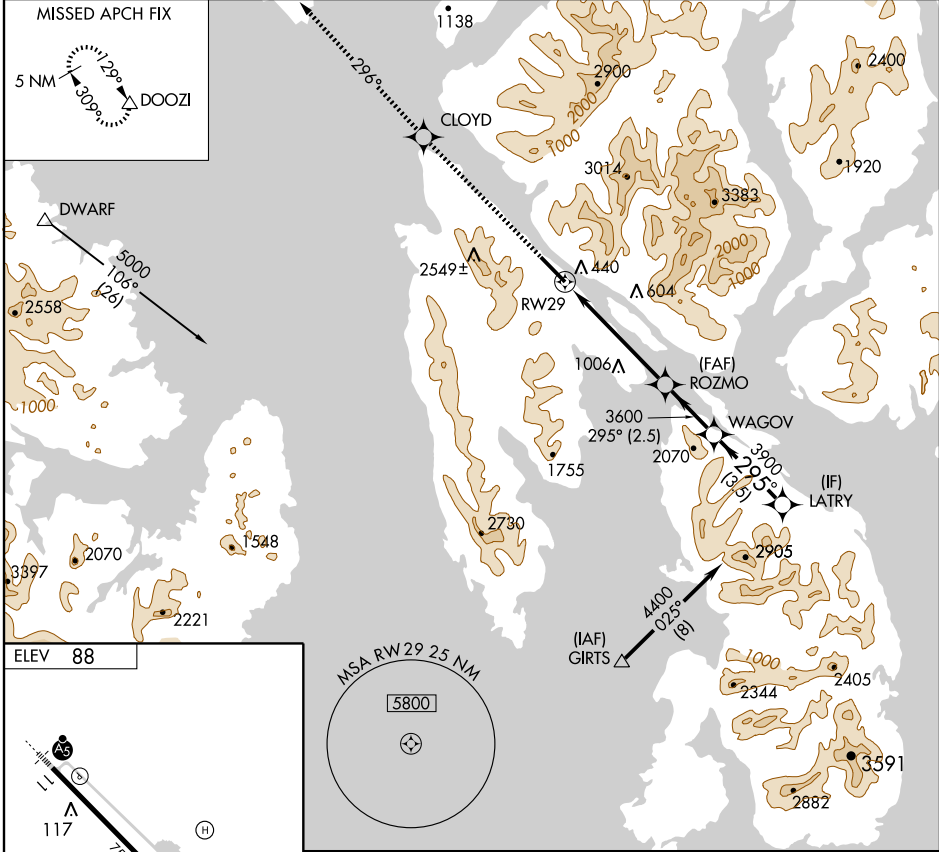
▽ ▲ NA	DME/DME RNP- 0.3 NA. Procedure NA at night.
-------------------------	--

MISSED APPROACH: Climb to 5000 direct CLOYD and via 296° track to DOOZI and hold.

ATIS ★ 134.45

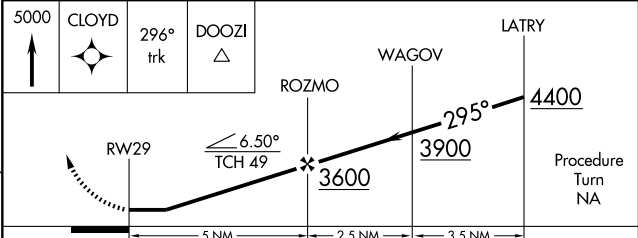
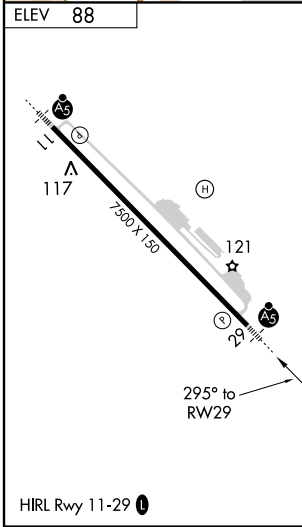
ANCHORAGE CENTER 118.5 284.6
--

KETCHIKAN RADIO 123.6 (CTAF) 0



AK, 22 OCT 2009 to 17 DEC 2009

AK, 22 OCT 2009 to 17 DEC 2009



CATEGORY	A	B	C	D
CIRCLING	2440-1¼ 2352 (2400-1¼)	2700-1½ 2612 (2700-1½)	2900-3 2812 (2900-3)	3280-3 3192 (3200-3)

KETCHIKAN, ALASKA
Orig 09239

55° 21' N-131° 43' W

KETCHIKAN INTL (KTN)(PAKT) RNAV (GPS)-B