

KETCHIKAN, ALASKA

AL-6053 (FAA)

# RNAV (GPS) RWY 11

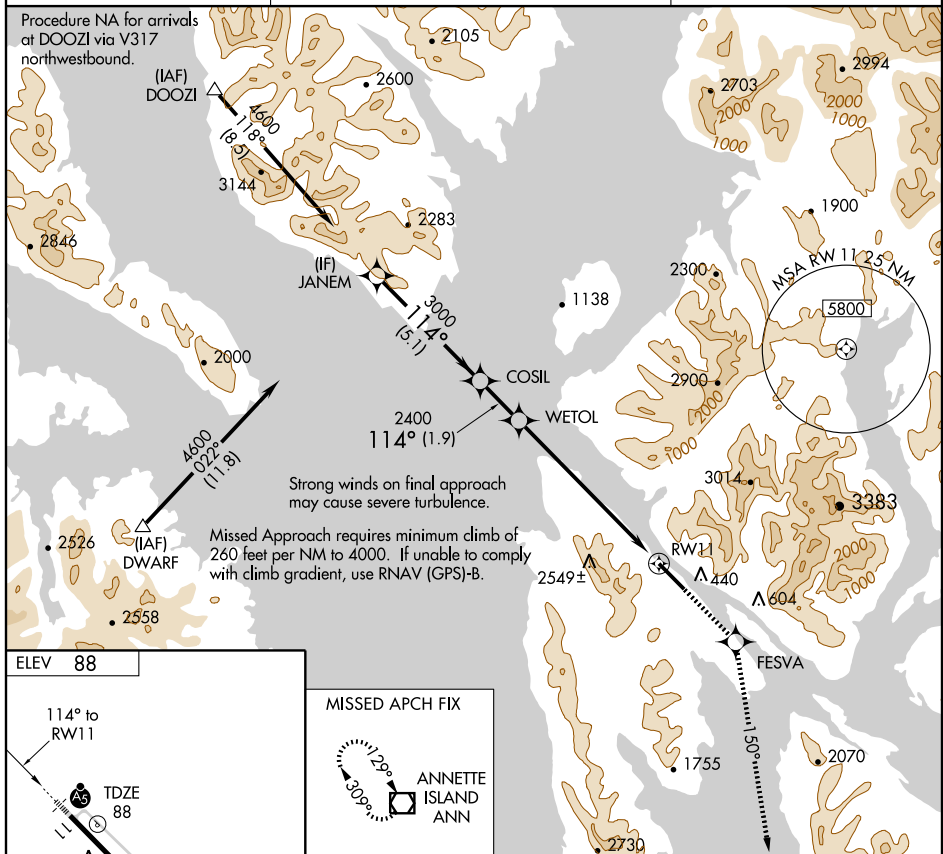
KETCHIKAN INTL (KTN)(PAKT)

WAAS CH <b>58009</b> W11A	APP CRS <b>114°</b>	Rwy Idg TDZE Apt Elev	<b>7500</b> <b>88</b> <b>88</b>
---------------------------------	------------------------	-----------------------------	---------------------------------------

**NA** For inoperative MALSR, increase LPV DA visibility to RVR 6000.  
DME/DME RNP-0.3 NA.

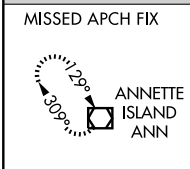
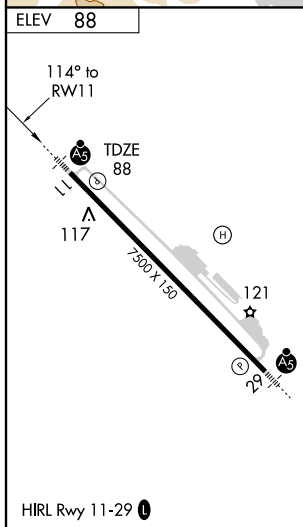
**MISSED APPROACH:** Climb to 5000 direct FESVA and via 150° track to ANN VOR/DME and hold.

ATIS ★ <b>134.45</b>	ANCHORAGE CENTER <b>118.5 284.6</b>	KETCHIKAN RADIO <b>123.6 (CTAF)</b>
-------------------------	--	--



AK, 22 OCT 2009 to 17 DEC 2009

AK, 22 OCT 2009 to 17 DEC 2009



Procedure Turn NA	JANEM	COSIL	WETOL	5000	FESVA	150° trk	ANN
	4600	3000	2400				
GS 3.00° TCH 50	114°		150°		RWY 11		
	5.1 NM	1.9 NM	6.8 NM				
CATEGORY	A	B	C	D			
LPV DA	438/40 350 (400-3/4)						

KETCHIKAN, ALASKA  
Orig 09239

55° 21' N-131° 43' W

# KETCHIKAN INTL (KTN)(PAKT) RNAV (GPS) RWY 11