

MOHALL, NORTH DAKOTA

AL-6052 (FAA)

VORTAC MOT 117.1 Chan 118	APP CRS 329°	Rwy Idg 3121 TDZE 1649 Apt Elev 1649
---	------------------------	---

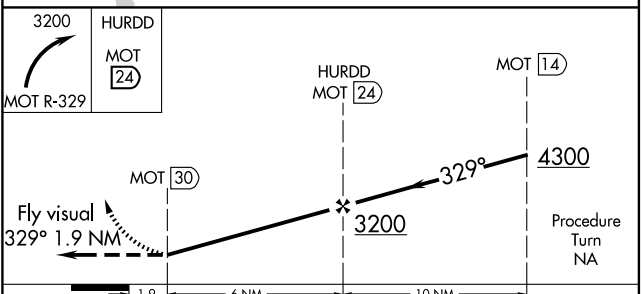
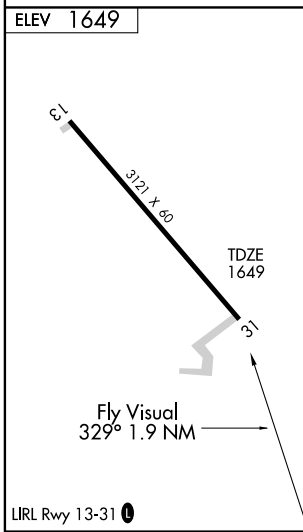
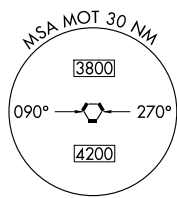
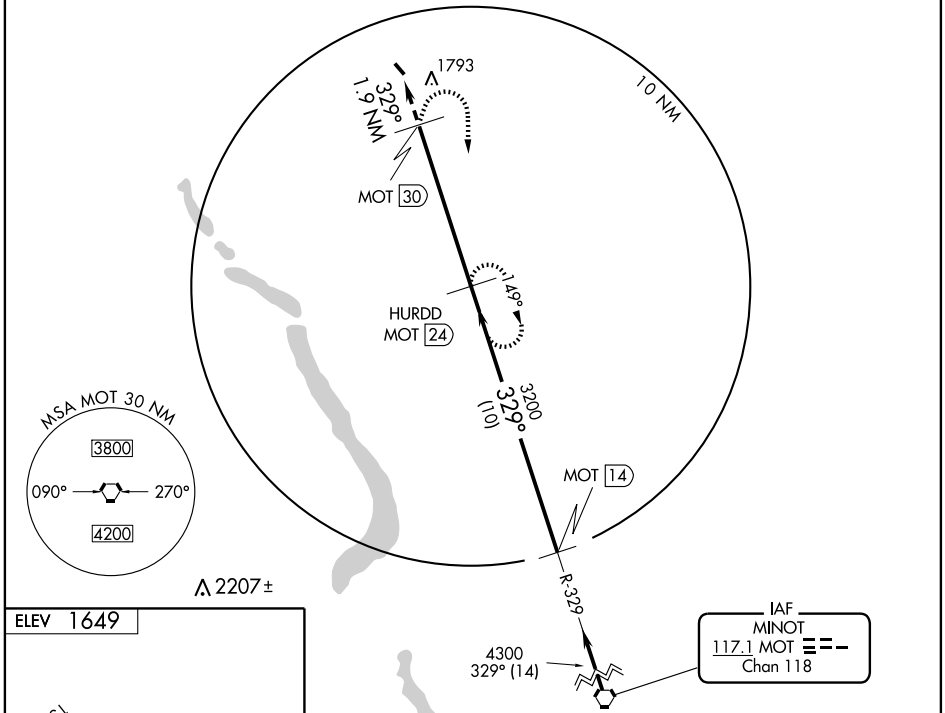
VOR/DME RWY 31

MOHALL MUNI (HBC)

▲ NA Use Minot Intl altimeter setting.	MISSED APPROACH: Climbing right turn to 3200 via MOT R-329 to HURDD 24 DME and hold.
MINOT APP CON* 119.6 363.8	UNICOM 122.8 (CTAF) 0

NC-1, 22 OCT 2009 to 19 NOV 2009

NC-1, 22 OCT 2009 to 19 NOV 2009



CATEGORY	A	B	C	D
S-31	2800-2	1151 (1200-2)	2800-3 1151 (1200-3)	NA
CIRCLING	2800-2	1151 (1200-2)	2800-3 1151 (1200-3)	NA

MOHALL, NORTH DAKOTA
Amdt 2C 09015

48°46'N-101°32'W

VOR/DME RWY 31

MOHALL MUNI (HBC)