

MOHALL, NORTH DAKOTA

AL-6052 (FAA)

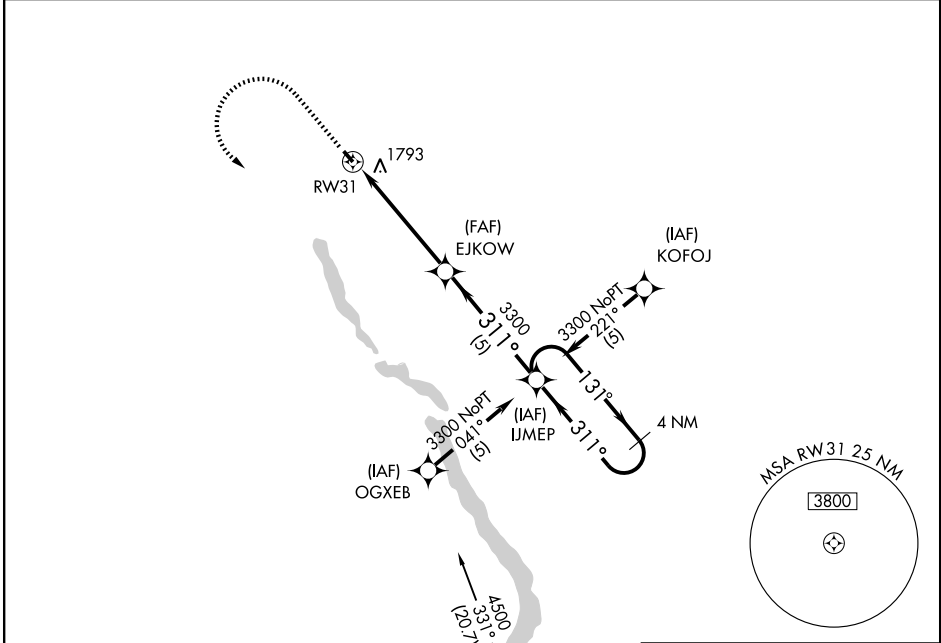
# RNAV (GPS) RWY 31

MOHALL MUNI (HBC)

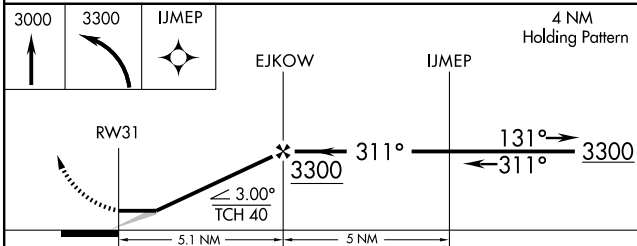
APP CRS <b>311°</b>	Rwy Idg <b>3121</b>
	TDZE <b>1649</b>
	Apt Elev <b>1649</b>

**▲ NA** Use Minot Intl altimeter setting. GPS or RNP-0.3 required. DME/DME RNP-0.3 NA. MISSED APPROACH: Climb to 3000 then climbing left turn to 3300 direct IJMEP WP and hold.

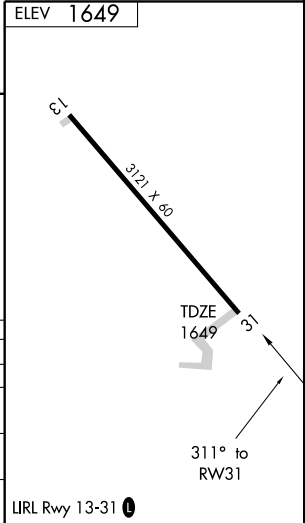
MINOT APP CON ★ <b>119.6 363.8</b>	UNICOM <b>122.8 (CTAF) 0</b>
---------------------------------------	---------------------------------



▲ 2207±



CATEGORY	A	B	C	D
GLS DA	NA			
LNAV/VNAV DA	NA			
LNAV MDA	2180-1	531 (600-1)	2180-1½ 531 (600-1½)	NA
CIRCLING	2240-1	591 (600-1)	2240-1½ 591 (600-1½)	NA



NC-1, 22 OCT 2009 to 19 NOV 2009

NC-1, 22 OCT 2009 to 19 NOV 2009

MOHALL, NORTH DAKOTA  
Orig 09015

48° 46' N - 101° 32' W

# RNAV (GPS) RWY 31

MOHALL MUNI (HBC)