

RED OAK, IOWA

AL-6051 (FAA)

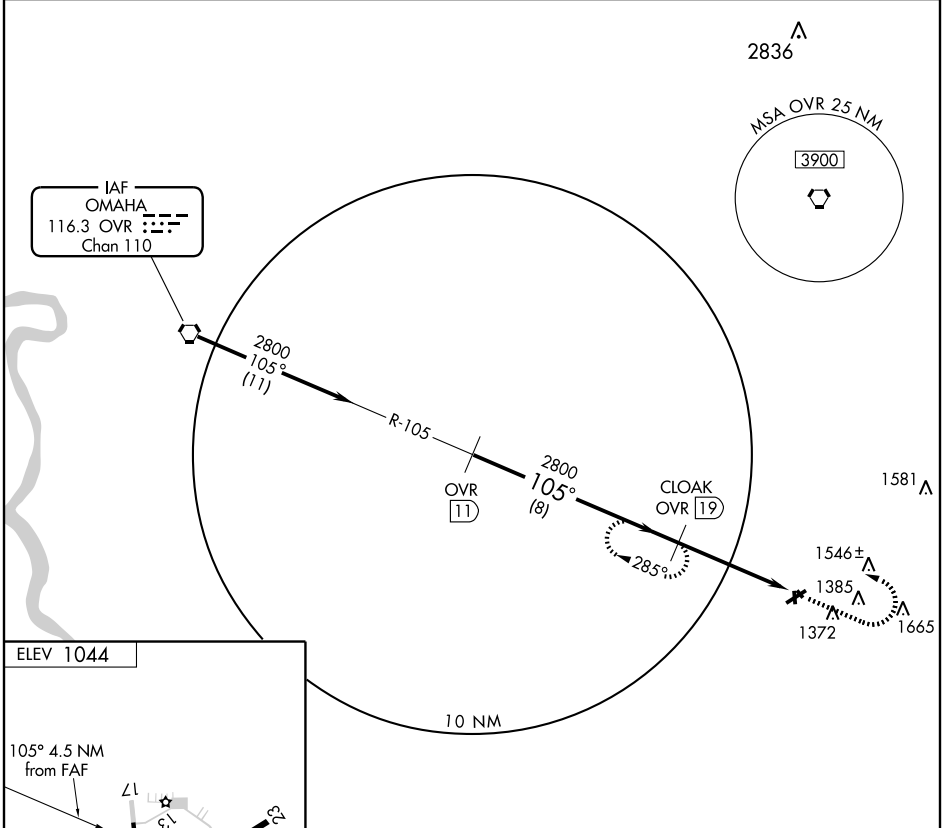
VORTAC OVR 116.3 Chan 110	APP CRS 105°	Rwy Idg TDZE Apt Elev N/A N/A 1044
---	------------------------	--

VOR/DME-A

RED OAK MUNI (RDK)

▽ MISSED APPROACH: Climb to 2800 then left turn via OVR R-105 to CLOAK/19 DME and hold.

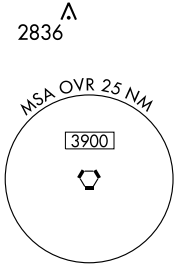
AWOS-3 119.775	OMAHA APP CON 124.5 263.0	GCO 121.725	UNICOM 122.8 (CTAF) 0
--------------------------	-------------------------------------	-----------------------	---------------------------------



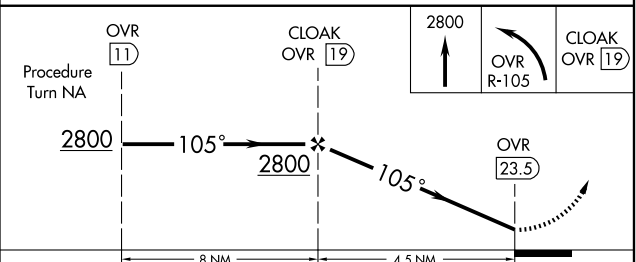
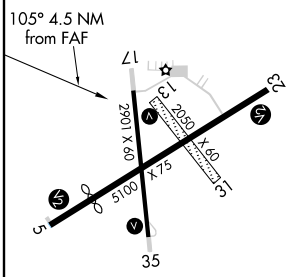
NC-3, 22 OCT 2009 to 19 NOV 2009

NC-3, 22 OCT 2009 to 19 NOV 2009

IAF
OMAHA
116.3 OVR
Chan 110



ELEV 1044



CATEGORY	A	B	C	D
CIRCLING	1660-1 616 (700-1)	1740-1¼ 696 (700-1¼)	NA	

MIRL Rwy 5-23 and 17-35
REIL Rwy 5 and 23

RED OAK, IOWA
Amdt 5 09183

41°01'N-95°16'W

RED OAK MUNI (RDK)

VOR/DME-A