

RED OAK, IOWA

AL-6051 (FAA)

NDB RWY 17

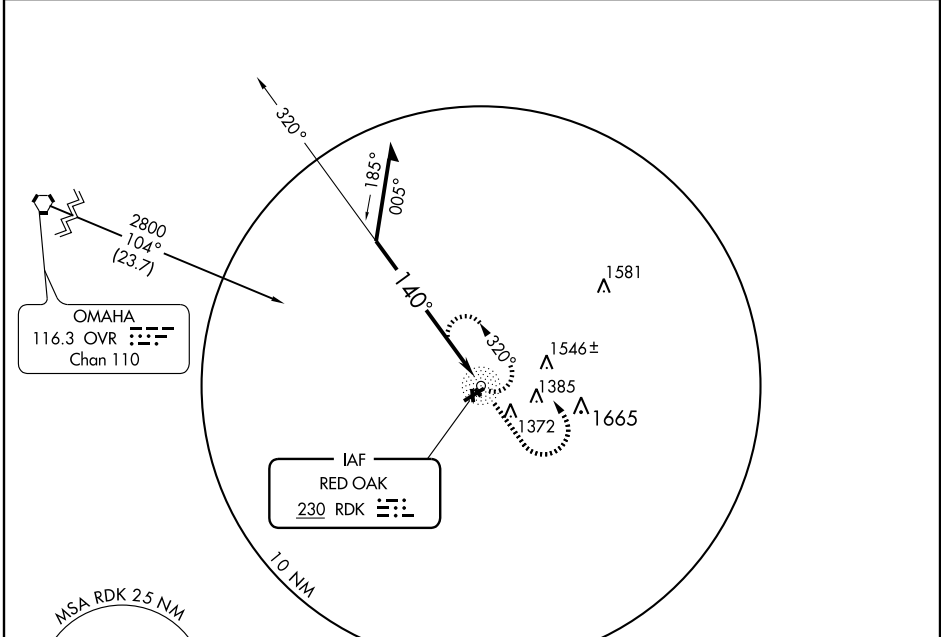
RED OAK MUNI (RDK)

NDB RDK 230	APP CRS 140°	Rwy Idg TDZE Apt Elev	2901 1044 1044
-----------------------	------------------------	-----------------------------	---

▽
▲ NA

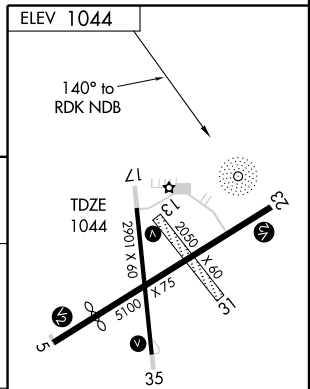
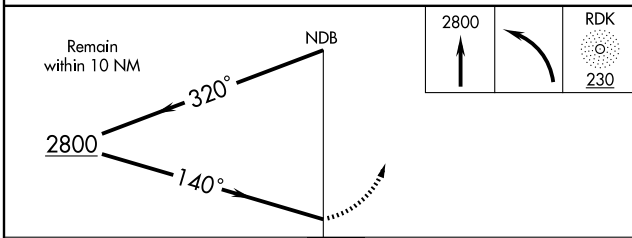
MISSED APPROACH: Climb to 2800 then left turn direct RDK NDB and hold.

AWOS-3 119.775	OMAHA APP CON 124.5 263.0	GCO 121.725	UNICOM 122.8 (CTAF) 0
--------------------------	-------------------------------------	-----------------------	--



NC-3, 22 OCT 2009 to 19 NOV 2009

NC-3, 22 OCT 2009 to 19 NOV 2009



CATEGORY	A	B	C	D
S-17	1760-1	716 (800-1)		NA
CIRCLING	1760-1	716 (800-1)		NA

MIRL Rwy 5-23 and 17-35 **0**
REIL Rwy 5 and 23 **0**

RED OAK, IOWA
Amdt 8A 09183

41°01'N-95°16'W

RED OAK MUNI (RDK)

NDB RWY 17