

WAAS CH 72709 W27A	APP CRS 272°	Rwy Idg TDZE Apt Elev	4201 912 914
--	------------------------	-----------------------------	---

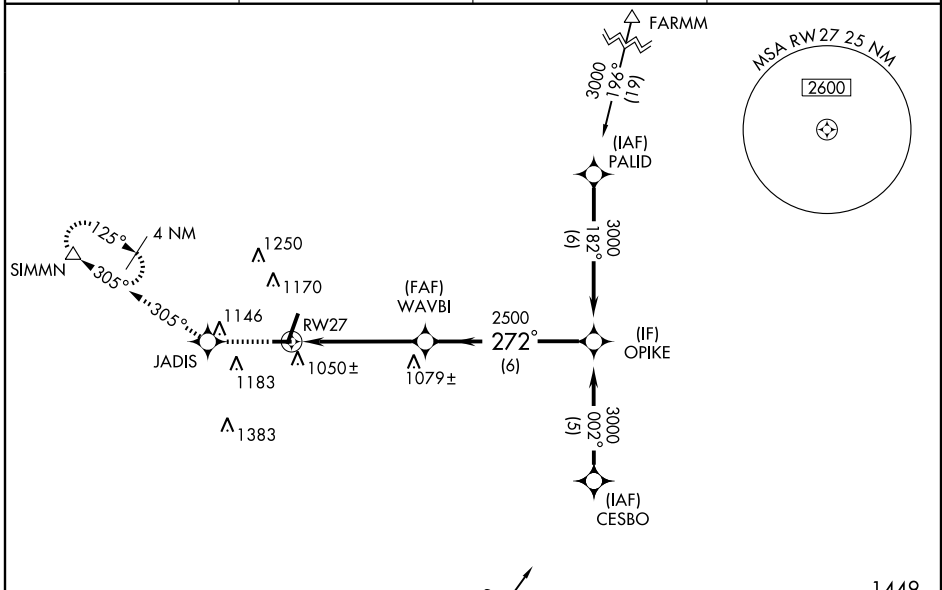
RNAV (GPS) RWY 27

DE KALB TAYLOR MUNI (DKB)

When local altimeter setting not received, use Aurora altimeter setting and increase all DA 61 feet and all MDA 80 feet; increase all LPV and LNAV/VNAV visibilities, LNAV Cats. C/D visibility, and Circling Cats. C/D visibility ¼ mile. Baro-VNAV NA when using Aurora altimeter setting. VDP NA when using Aurora altimeter setting. For uncompensated Baro-VNAV systems, LNAV/VNAV NA below -16° C (4°F) or above 47° C (116° F). DME/DME RNP-0.3 NA.

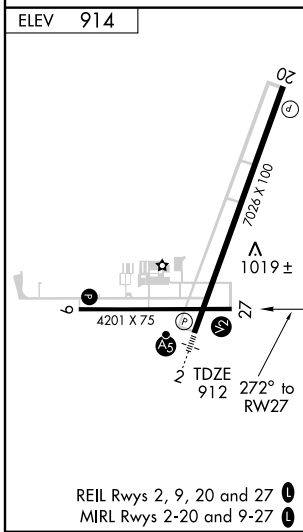
MISSED APPROACH: Climb to 3000 direct JADIS and via 305° track to SIMMN and hold.

AWOS-3 119.075	CHICAGO APP CON 133.5 349.0	GCO 121.725	UNICOM 122.7 (CTAF) 0
--------------------------	---------------------------------------	-----------------------	---------------------------------



EC-3, 22 OCT 2009 to 19 NOV 2009

EC-3, 22 OCT 2009 to 19 NOV 2009



3000	JADIS	305° TRK	SIMMN	OPIKE	Procedure Turn NA
*LNAV only.		*1.3 NM to RWY 27		WAVBI	3000
RWY 27		1.3 NM		3.4 NM	6 NM
2500		VGSi and RNAV glidepath not coincident		GS 3.00° TCH 45	
CATEGORY	A		B	C	D
LPV DA	1162-¾		250 (300-¾)		
LNAV/VNAV DA	1317-1½		405 (500-1½)		
LNAV MDA	1360-1	448 (500-1)		1360-1½	448 (500-1½)
CIRCLING	1360-1	1480-1	1540-1¾	1540-2	
	446 (500-1)	566 (600-1)	626 (700-1¾)	626 (700-2)	