

ILS or LOC RWY 2

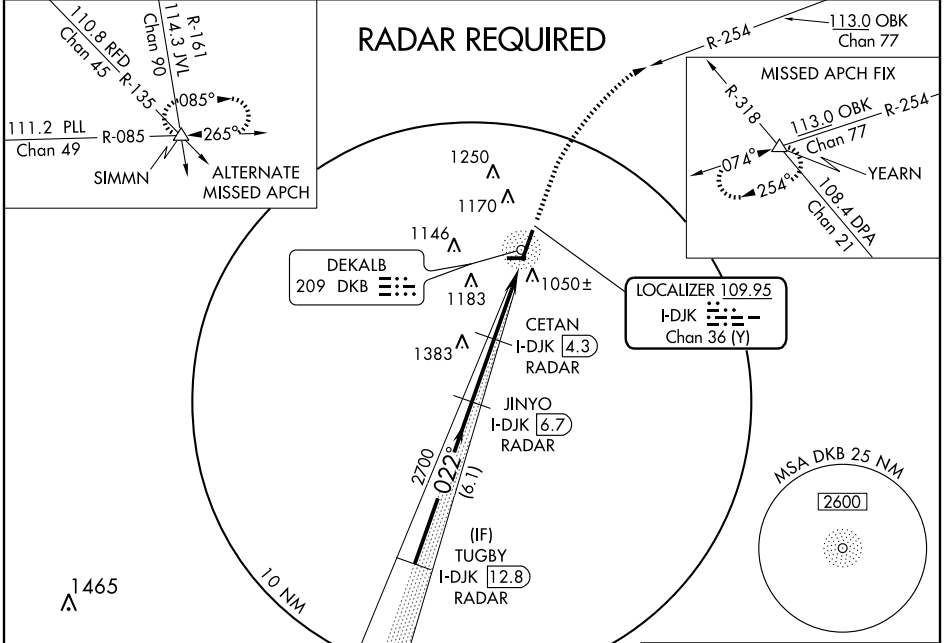
DE KALB TAYLOR MUNI (DKB)

LOC/DME I-DJK 109.95 Chan 36 (Y)	APP CRS 022°	Rwy Idg 7026 TDZE 913 Apt Elev 914
---	------------------------	--

DME or RADAR Required. VDP NA when using Aurora altimeter setting.
 ▼ When local altimeter setting not received, use Aurora altimeter setting and increase DA 95 feet and all MDA 80 feet, increase S-ILS 2 all Cats., S-LOC 2 Cat. C and D, and Circling Cat. C and D visibility ¼ mile.

MALSRS MISSED APPROACH: Climb to 3000 via heading 022° and OBK VOR/DME R-254 to YEARN Int and hold.

AWOS-3 119.075	CHICAGO APP CON 133.5 349.0	GCO 121.725	UNICOM 122.7 (CTAF)
--------------------------	---------------------------------------	-----------------------	-------------------------------



ELEV 914
REIL Rwy 2, 9, 20 and 27
MIRL Rwy 2-20 and 9-27

4201 X 75

27

TDZE 913

022° 5.4 NM from FAF

1019 ±

FAF to MAP 5.4 NM					
Knots	60	90	120	150	180
Min:Sec	5:24	3:36	2:42	2:10	1:48

CATEGORY	A	B	C	D
S-ILS 2	1113-¾ 200 (200-¾)			
S-LOC 2	1280-1 367 (400-1)		1280-1¼ 367 (400-1¼)	
CIRCLING	1360-1 446 (500-1)	1480-1 566 (600-1)	1540-1¾ 626 (700-1¾)	1540-2 626 (700-2)

EC-3, 22 OCT 2009 to 19 NOV 2009

EC-3, 22 OCT 2009 to 19 NOV 2009