

DALAP, RM

AL-6049 (FAA)

| | |
|------------------------|------------------------|
| APP CRS 246° | Rwy Idg 7897 |
| | TDZE 6 |
| | Apt Elev 6 |

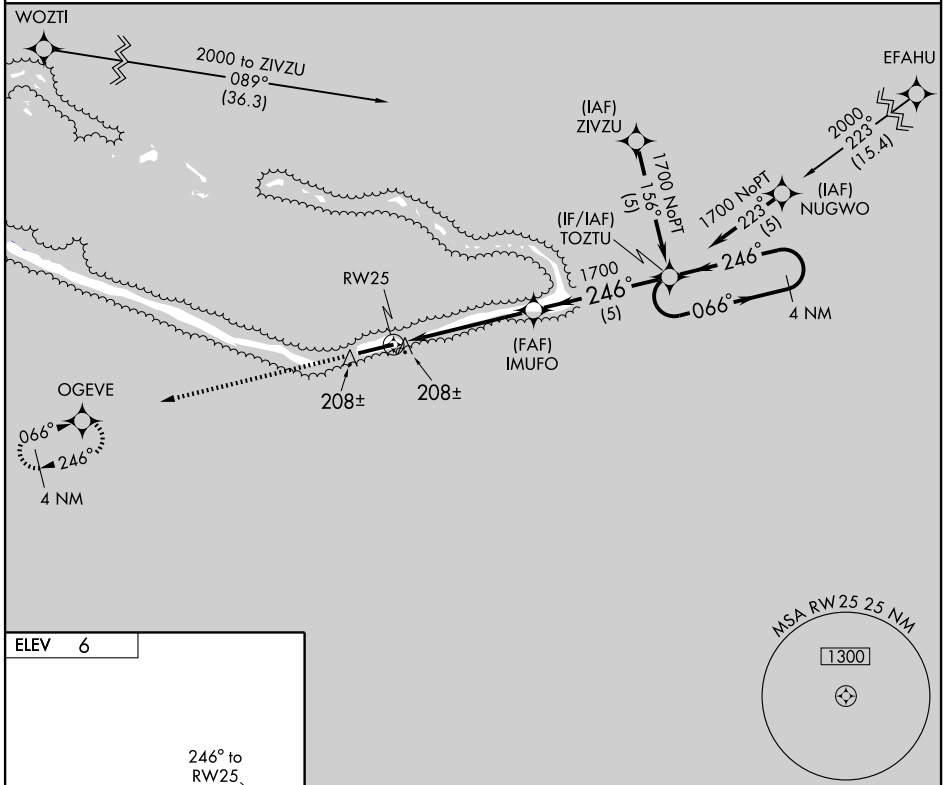
RNAV (GPS) RWY 25

DALAP/MARSHALL ISLANDS INTL (MAJ) (PKMJ)

⚠ Obtain local altimeter setting on CTAF; when not received, procedure NA.
 No controlled airspace below 5500.
 DME/DME RNP-0.3 NA.

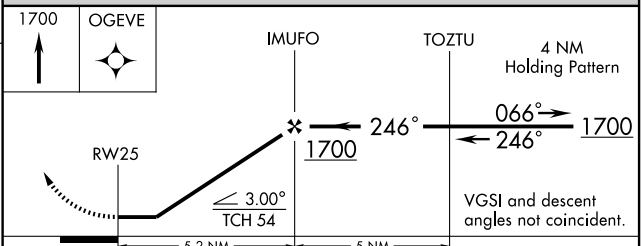
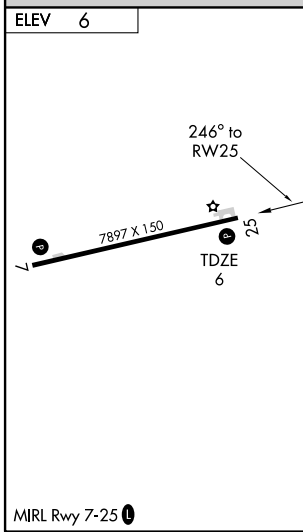
MISSED APPROACH: Climb to 1700 direct OGEVE WP and hold.

MAJURO RADIO
123.6 (CTAF) 0



PAC, 22 OCT 2009 to 17 DEC 2009

PAC, 22 OCT 2009 to 17 DEC 2009



| CATEGORY | A | B | C | D |
|----------|-------|-------------|------------------------|------------------------|
| LNAV MDA | 460-1 | 454 (500-1) | 460-1¼ 454 (500-1¼) | 460-1½ 454 (500-1½) |
| CIRCLING | 520-1 | 514 (600-1) | 520-1½ 514 (600-1½) | 560-2 554 (600-2) |

DALAP, RM
Orig-B 09071

DALAP/MARSHALL ISLANDS INTL (MAJ) (PKMJ)
 07°04'N-171° 16'E
RNAV (GPS) RWY 25