

RNAV (GPS) RWY 23

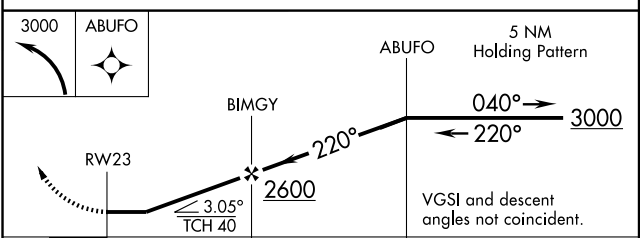
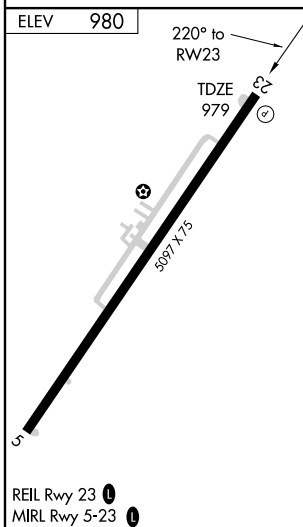
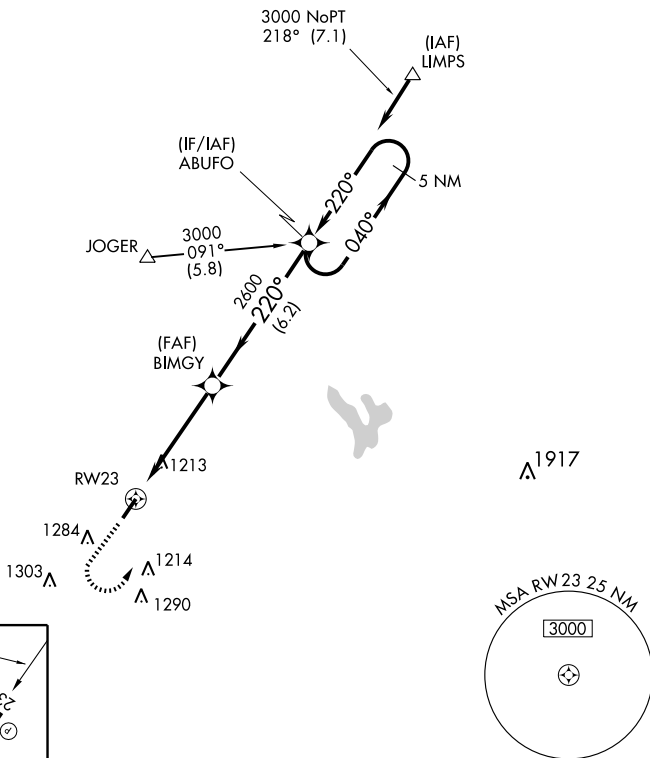
WASHINGTON COURT HOUSE/FAYETTE COUNTY (I23)

APP CRS 220°	Rwy Idg 5097
	TDZE 979
	Apt Elev 980

⚠ When local altimeter setting not received, use Airborne Airpark altimeter setting and increase all MDAs 60 feet and visibility Cats C and D ¼ mile. Visibility reduction by helicopters NA. DME/DME RNP-0.3 NA.

⚠ NA MISSED APPROACH: Climbing left turn to 3000 direct ABUFO and hold.

AWOS-3 118.775	COLUMBUS APP CON 132.3 279.6	UNICOM 122.8 (CTAF) 0
--------------------------	----------------------------------------	---------------------------------



CATEGORY	A	B	C	D
LNAV MDA	1540-1	561 (600-1)	1540-1½ 561 (600-1½)	1540-1¾ 561 (600-1¾)
CIRCLING	1580-1	600 (600-1)	1640-1¾ 660 (700-1¾)	1640-2 660 (700-2)

RNAV (GPS) RWY 23

EC-2, 22 OCT 2009 to 19 NOV 2009

EC-2, 22 OCT 2009 to 19 NOV 2009