

HILLSBORO, OHIO

AL-6045 (FAA)

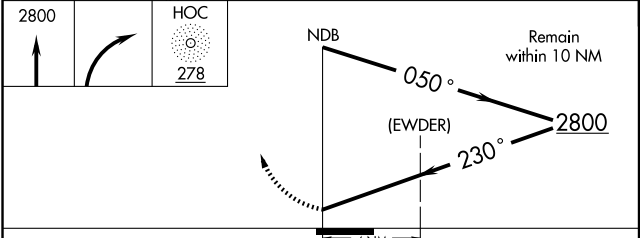
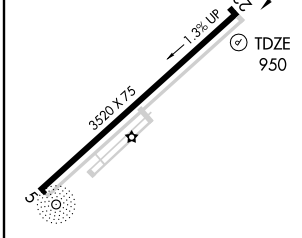
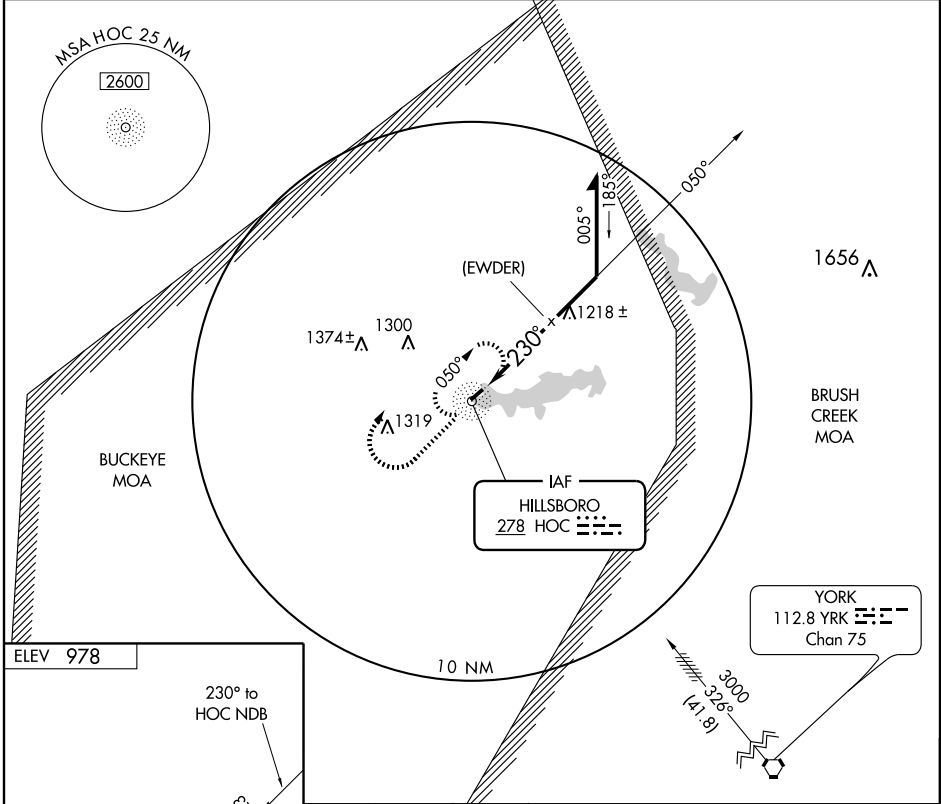
NDB or GPS RWY 23

HILLSBORO/HIGHLAND COUNTY (HOC)

NDB HOC 278	APP CRS 230°	Rwy Idg TDZE Apt Elev	3520 950 978
-----------------------	------------------------	-----------------------------	---

▽ Use Cincinnati Lunken Field altimeter setting.
▲ NA MISSED APPROACH: Climb to 2800 then right turn direct HOC NDB and hold.

AWOS-3 118.175	INDIANAPOLIS CENTER 134.0 290.5	UNICOM 123.05 (CTAF) 0
--------------------------	---	----------------------------------



REIL Rwy 23 **0**
MIRL Rwy 5-23 **0**

Knots	60	90	120	150	180
Min:Sec					

CATEGORY	A	B	C	D
S-23	1760-1 810 (800-1)	1760-1¼ 810 (800-1¼)	1760-2¼ 810 (800-2¼)	NA
CIRCLING	1760-1 782 (800-1)	1760-1¼ 782 (800-1¼)	1760-2¼ 782 (800-2¼)	NA

HILLSBORO, OHIO
Amdt 4 03023

39°11'N-83°32'W

HILLSBORO/HIGHLAND COUNTY (HOC)
NDB or GPS RWY 23

EC-2, 22 OCT 2009 to 19 NOV 2009

EC-2, 22 OCT 2009 to 19 NOV 2009