

LODI, CALIFORNIA

AL-6044 (FAA)

# RNAV (GPS)-B

LODI (103)

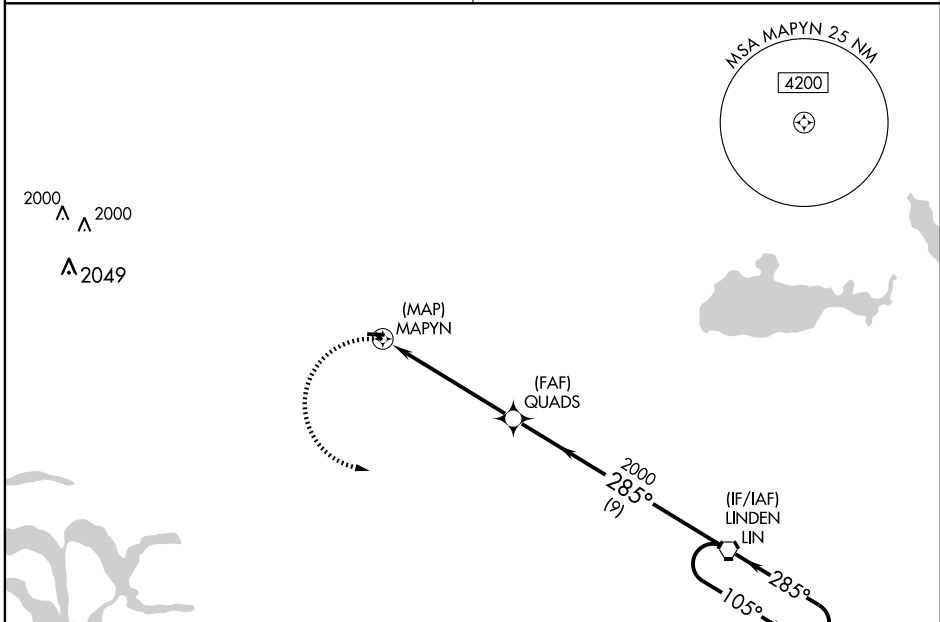
APP CRS <b>285°</b>	Rwy Idg TDZE Apt Elev	<b>N/A</b> <b>N/A</b> <b>60</b>
------------------------	-----------------------------	---------------------------------------

**▽** DME/DME RNP-0.3 NA.  
**△NA** Use Stockton altimeter setting, when not received, use Sacramento Intl altimeter setting and increase all MDA 40 feet.

MISSED APPROACH: Climbing left turn to 2000 direct LIN VORTAC and hold.

NORCAL APP CON  
**125.1 363.2**

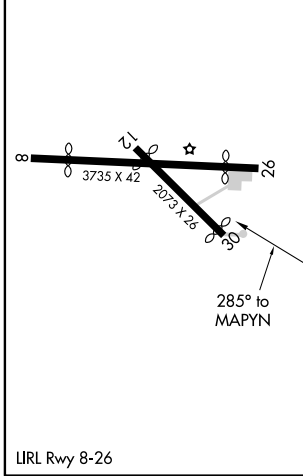
CTAF  
**122.9**



SW-2, 22 OCT 2009 to 19 NOV 2009

SW-2, 22 OCT 2009 to 19 NOV 2009

ELEV 60



NoPT for arrival on LIN VORTAC airway radials 124 CW 192.

2000	LIN	QUADS	VORTAC	4 NM Holding Pattern
2000	MAPYN	285°	105°	2000
5.5 NM	9 NM			
CATEGORY	A	B	C	D
CIRCLING	640-1	580 (600-1)		NA

LODI, CALIFORNIA  
Orig 09071

38°12'N-121°16'W

# RNAV (GPS)-B

LODI (103)