

MACKINAC ISLAND, MICHIGAN

AL-6041 (FAA)

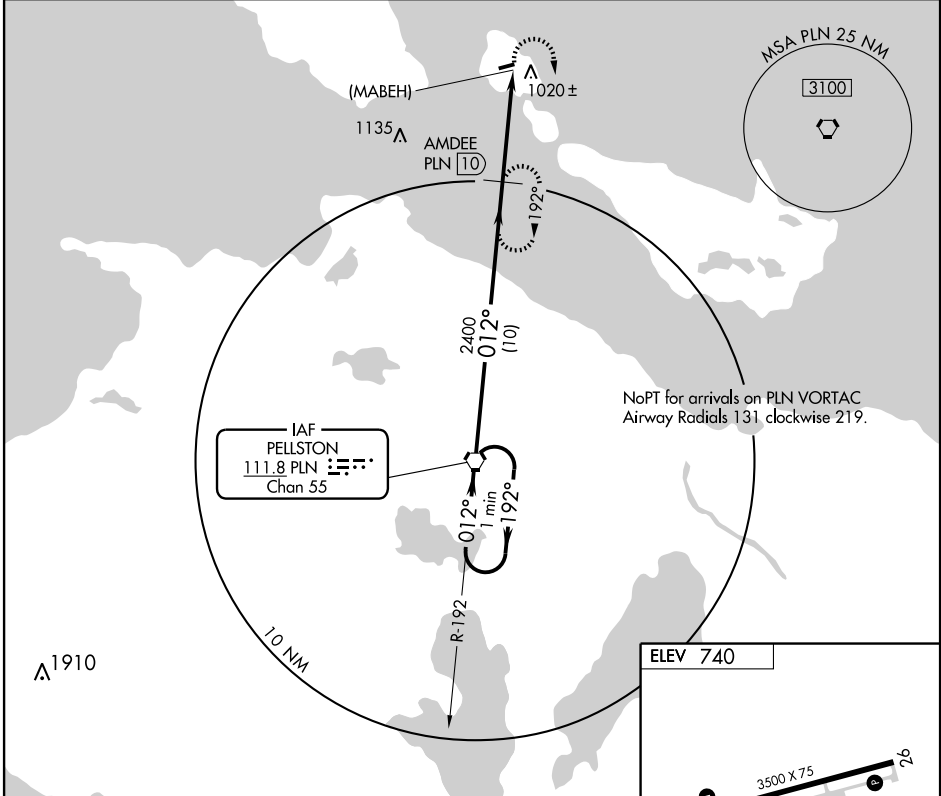
# VOR/DME or GPS-A MACKINAC ISLAND (MCD)

VORTAC PLN <b>111.8</b> Chan <b>55</b>	APP CRS <b>012°</b>	Rwy Idg TDZE Apt Elev <b>N/A</b> <b>N/A</b> <b>740</b>
--	------------------------	---

**▼** Use Mackinac Island altimeter setting. If not available, use Pellston altimeter setting and increase all MDAs 80 feet; if neither are available, procedure not authorized.  
**▲** NA

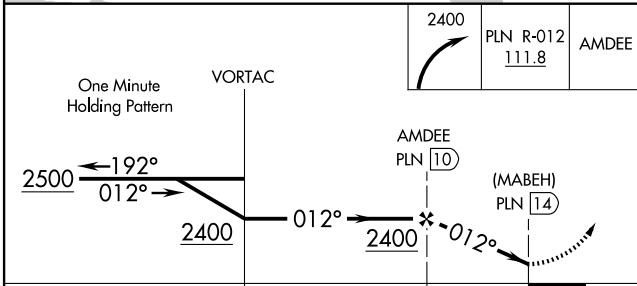
**MISSED APPROACH:** Climbing right turn to 2400 via PLN R-012 to AMDEE 10 DME and hold.

AWOS-3 <b>118.275</b>	MINNEAPOLIS CENTER <b>134.6 354.05</b>	UNICOM <b>122.7 (CTAF)</b>	<b>122.8</b> <b>①</b>
--------------------------	---	-------------------------------	-----------------------

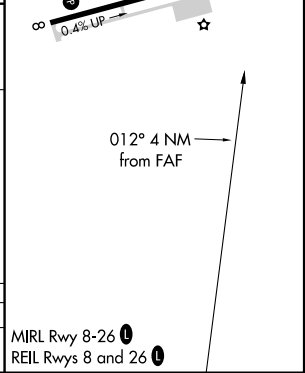


EC-1, 22 OCT 2009 to 19 NOV 2009

EC-1, 22 OCT 2009 to 19 NOV 2009



CATEGORY	A	B	C	D
CIRCLING	1320-1	581 (600-1)	1320-1½ 581 (600-1½)	NA



MACKINAC ISLAND, MICHIGAN  
Amdt 8A 09239

45°52'N - 84°38'W

# MACKINAC ISLAND (MCD) VOR/DME or GPS-A