

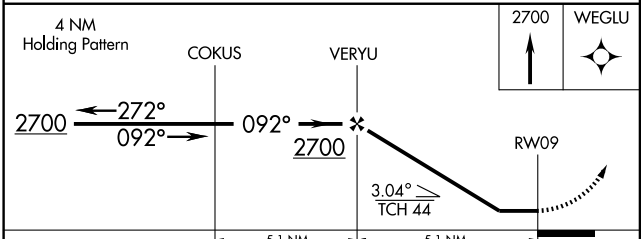
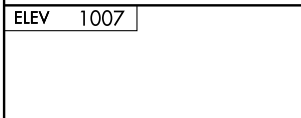
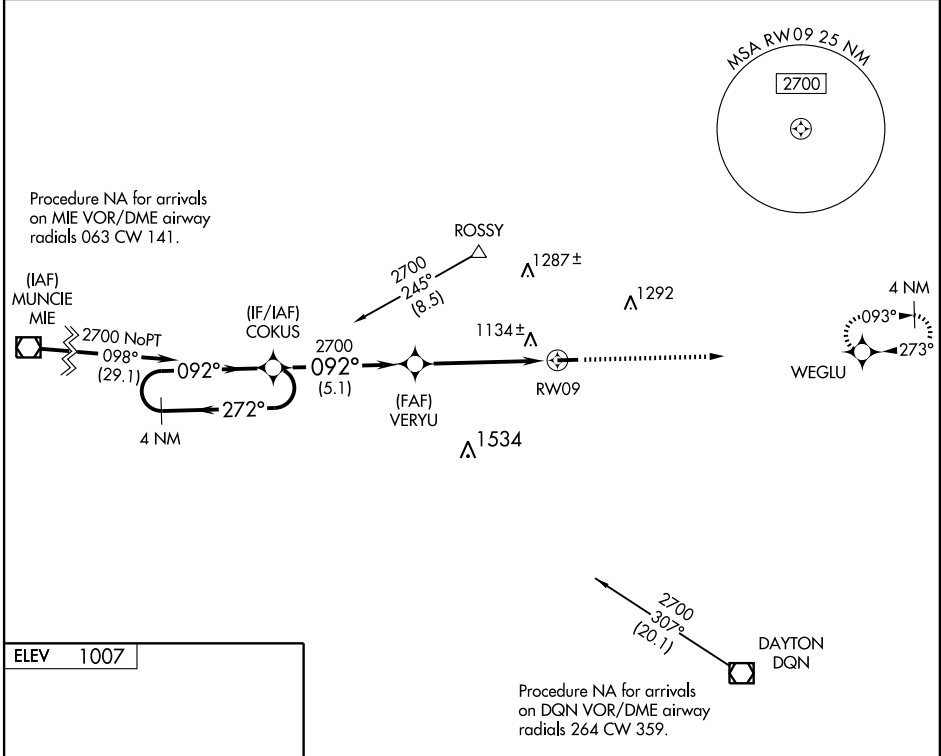
RNAV (GPS) RWY 9

VERSAILLES/DARKE COUNTY (VES)

| | |
|------------------------|-------------------------|
| APP CRS 092° | Rwy Idg 4512 |
| | TDZE 1007 |
| | Apt Elev 1007 |

| | |
|---|--|
| <p>▼ DME/DME RNP-0.3 NA. Visibility reduction by helicopters NA. ▲ NA Obtain local altimeter setting on CTAF; when not received, use James M. Cox Dayton Intl altimeter setting.</p> | <p>MISSED APPROACH: Climb to 2700 direct WEGLU and hold.</p> |
|---|--|

| | | |
|---------------------------------|--|---|
| <p>AWOS-3 123.75</p> | <p>DAYTON APP CON 134.45 352.05</p> | <p>UNICOM 122.8 (CTAF) ①</p> |
|---------------------------------|--|---|



| CATEGORY | A | B | C | D |
|---|-------------|-------------|---|----|
| LNAY MDA | 1400-1 | 393 (400-1) | | NA |
| CIRCLING | 1440-1 | 1460-1 | | NA |
| | 433 (500-1) | 453 (500-1) | | |
| JAMES M. COX DAYTON INTL ALTIMETER SETTING MINIMUMS | | | | |
| LNAY MDA | 1440-1 | 433 (500-1) | | NA |
| CIRCLING | 1500-1 | 493 (500-1) | | NA |

REIL Rwy 9 and 27 ①
 MIRL Rwy 9-27 ①

EC-2, 22 OCT 2009 to 19 NOV 2009

EC-2, 22 OCT 2009 to 19 NOV 2009