

PRAIRIE DU CHIEN, WISCONSIN

AL-6037 (FAA)

VORTAC UKN	APP CRS	Rwy Idg	3999
116.6	305°	TDZE	661
Chan 113		Apt Elev	661

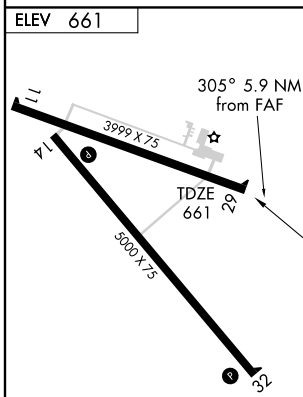
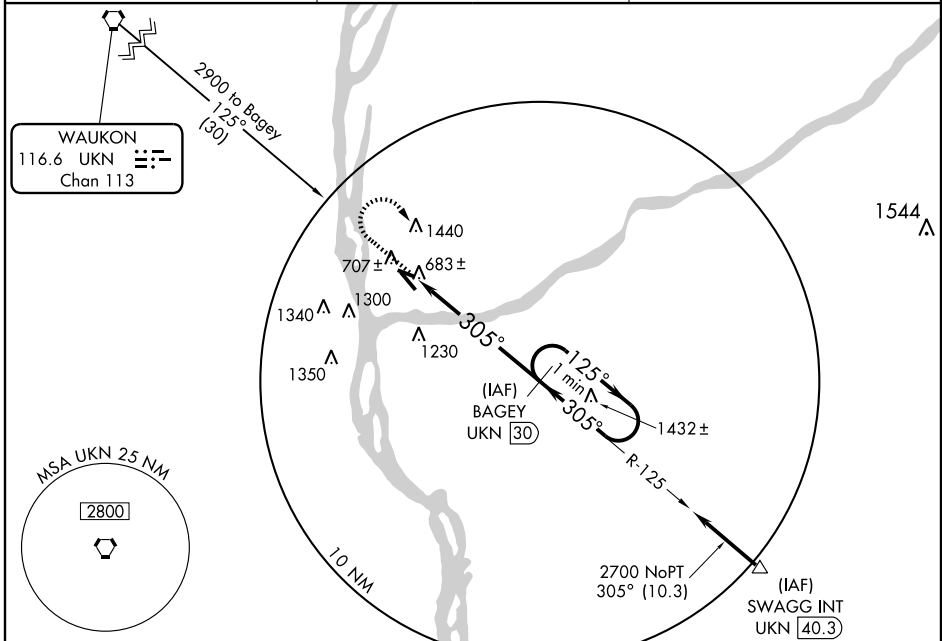
VOR/DME RWY 29

PRAIRIE DU CHIEN MUNI (PDC)

▲
▲

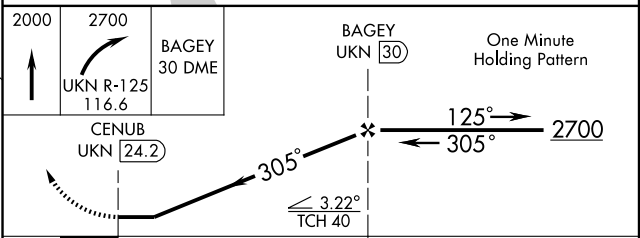
MISSED APPROACH: Climb to 2000, then climbing right turn to 2700 via UKN R-125 to BAGEY/30 DME and hold.

AWOS-3 119.925	CHICAGO CENTER 133.95 281.4	UNICOM 122.8 (CTAF) 0
--------------------------	---------------------------------------	---------------------------------



REIL Rwy 14 and 32 0
MIRL Rwy 14-32 and 11-29 0

Knots	60	90	120	150	180
Min:Sec					



CATEGORY	A	B	C	D
S-29	1560-1¼ 899 (900-1¼)		1560-2¾ 899 (900-2¾)	1560-3 899 (900-3)
CIRCLING	1580-1¼ 919 (1000-1¼)		1800-3 1139 (1200-3)	

PRAIRIE DU CHIEN, WISCONSIN
Amdt 8 07074

43° 01' N-91° 07' W

PRAIRIE DU CHIEN MUNI (PDC) VOR/DME RWY 29

EC-3, 22 OCT 2009 to 19 NOV 2009

EC-3, 22 OCT 2009 to 19 NOV 2009